

Consigned by
TMD KATAHDINS

Tom & Maria Dosch ~ 605/329-2478
PO Box 517, Frederick, SD 57441
Email: ewemad@nvc.net
Web: www.doschkatahdins.com
VFSCP ~ 11/27/01

301-Yearling Ram
TMD 909 ~ RR

B: 03/09/09 Tr
S: NDS 07-383 053492
D: TMD 0623 049041

This ram is in the top 5% of the breed for milk and growth on NSIP. He is structurally correct with a lot of capacity.

302-Yearling Ram
TMD 931 ~ RR

B: 03/14/09
S: NDS 07-383 053492
D: TMD 0632 049046

This ram has great spring of rib, wide top, correct structurally and in the top 5% of the breed for milk and growth on NSIP.

303-Yearling Ewe
TMD 957 ~ RR

B: 03/17/09 Tr
S: NDS 5553 045010
D: SWP 05-170 044680

This ewe was raised a triplet on her mom along with TMD 958-both ewes have excellent hair coats and will make a good addition to anyone's flock.

304-Yearling Ewe
TMD 958

B: 03/17/09 Tr
S: NDS 5553 045010
D: SWP 05-170

Consigned by
BROKAW FARM
KATAHDINS

Mary Brokaw
RR 1 Box 39, Stronghurst, IL 61480
309/924-1510 ~ Cell: 309/337-9756
Email: pbbrokaw@menmouthnet.net
Web: www.brokawfarms.com
VFSCP ~ 04/2000

305-Fall Ram Lamb
PBB 8149-6028 ~ RR

B: 12/27/09 Tw
S: CK 04-421 039043
D: Yellow 7145-854 037492

Extremely well-balance, growthy ram lamb out of our Case (CK) bloodline.

306-January Ram Lamb
PBB 046-6063 ~ RR

B: 01/01/10 Tw
S: LU 07-003 054244
D: White 60-0619 056930

High quality ram lamb out of our Lincoln University "Loaded Wagon" son.

KATAHDINS

Consigned by
OLSON BROTHERS

Noel, Carl, Will & Wyatt Olson
Rt 1 Box 8520, Warner, OK 74469
918/463-5119
Carl: 615/308-9411 ~ Noel: 615/218-6952
Email: olsonbrothers05@yahoo.com
VFSCP ~ 2000

307-Yearling Ram
OB 948 063440 ~ RR

B: 03/18/09 Tw
S: MVF 7777 058213
D: MVF 5199 043281

This ram was our lead buck lamb in our show flock. The spring lambs we have out of him are nice, long, extended lambs with eye appeal. We will also use him for fall lambs this year.

308-Yearling Ewe
OB 893 063419

B: 10/01/08 Tw
S: MVF 5331 043299
D: MVF 4043 040135

She was 2nd Fall Ewe Lamb at Fort Smith and Little Rock. Will make a sturdy ewe that has been exposed to the yearling ram for fall lambing.

309-Yearling Ewe
OB 898 063426

B: 01/09/09 Tw
S: MVF 7777 058213
D: MVF 7127 058742

1st Fall Ewe Lamb at Fort Smith and Little Rock. Reserve Ewe at both open shows.

310-Yearling Ewe
OB 914 063428 ~ RR

B: 02/19/09 Tw
S: MVF 7777 058213
D: MDW 0718 053064

This ewe will make someone an extremely good show ewe and her mother is one of our top producers.

311-Yearling Ewe
OB 976 063416

B: 04/06/09
S: MVF 7777 058213
D: MVF 4094 040147

This was our favorite ewe lamb last year. 1st Spring Ram at Fort Smith and Little Rock and Champion Ewe at Little Rock open show. She has already produced us a set of lambs out of the yearling ram. She is still one of our favorites.

312-Fall Ewe Lamb
OB 987

B: 09/25/09
S: MVF 7777 058213
D: MDW 0718 053064

We bought her mother out of the Midwest Sale the first year we had Katahdins. She has been a great producer. We should probably keep this ewe.



Grand Champion Katahdin Yearling Ram at the '09 Midwest Stud Ram Sale was a South Dakota entry.

313-January Ewe Lamb
OB 1004

B: 01/23/10 Tw
S: MVF 7777 058213

A very flashy eye appealing ewe lamb. Everything we sell will carry at least one R if not RR.

Consigned by
PIPESTONE FARM

GF & Deb Kennedy
PO Box 188, Pipestone, MN 56164
507/825-5341 ~ Cell: 507/215-0487
Email: gkennedy@pipevet.com

314-Yearling Ram
DOL 019 062068 ~ RR

B: 10/09/08 Tw
S: MVF 6931 053374
D: MVF 5633 047973

We have used this ram for two lamb crops.

Consigned by
PROFFITT
LIVESTOCK FARM

Jim Proffitt ~ 816/225-6032 (cell)
38208 Brady Ck Rd., Richmond, MO 64085
VFSCP ~ 08/2009

315-March Ram Lamb
Information Sale Day

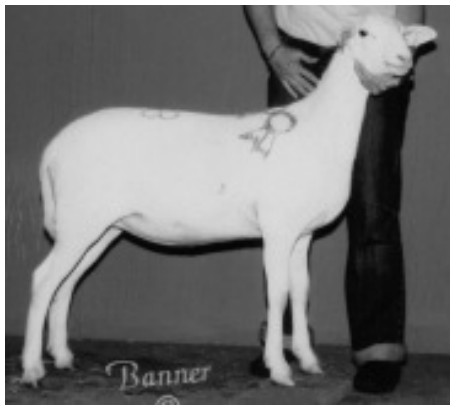
316-March Ewe Lamb
Information Sale Day

Our entries will be sired by Coplen ram and a Bull ewe.

Mail Bids & Delivery
Call Assistance
573/442-8257 Available

MIDWEST STUD RAM SALE

KATAHDINS



Grand Champion Katahdin Early Spring Ewe Lamb at the '09 Midwest Stud Ram Sale sold from Illinois to Kentucky for \$600.

Consigned by
POYNTER SHEEP FARM

Jeff & Jan Poynter
 12709 E 750th Rd., Paris, IL 61944
 217/466-4880 ~ Cell: 217/251-9984
 Email: jpoynter@tigerpaw.com
 Web: www.poyntersheepfarm.com

317-Yearling Ewe
POY 34 063645 ~ QR

B: 03/06/09 Tw
 S: MVF 6108 058804
 D: MVF 7713 058805

A light red ewe that is straight Mountain View Farm breeding. Her dam milks like a cow and raised triplet ewe lambs this year. Both sale entries are sired by the famous Red Bojangles ram.

318-Fall Ewe Lamb
POY 41 ~ QR

B: 09/07/09 Tw
 S: MVF 6108 058804
 D: ZWT 4162 047874

A red ewe that is a full sister to the Champion Ewe at the '09 IN State Fair. Show and production combined.



Reserve Champion Katahdin Yearling Ewe at the '09 Midwest Stud Ram Sale sold from South Dakota to Missouri for \$350.

Consigned by
CMG KATAHDINS

Carl Ginapp ~ 641/425-0592 (cell)
 19998 Vine Ave., Mason City, IA 50401
 Email: carl@cmgkatahdins.com
 Web: www.cmgkatahdins.com
 VFSCP ~ 05/2000

319-January Ram Lamb
CMG 10009 ~ RR

B: 01/10/10
 S: CMG 9011 066223
 D: CMG 7014 059257

Balanced EPDs, high milk and pounds weaned EPDs.

320-January Ram Lamb
CMG 10012 ~ RR

B: 01/10/10 Tw
 S: TMD 8-106 060194
 D: CMG 193 049934

Top balanced EPDs, great growth and maternal traits.

321-January Ram Lamb
CMG 10016 ~ RR

B: 01/13/10
 S: TMD 8-106 060194
 D: CMG 8067 059245

Fast growing lamb with balanced EPDs. Single lamb out of a first time mother.

322-March Ram Lamb
CMG 10099 ~ RR

B: 03/02/10
 S: TMD 777J 053426
 D: CMG 9033

Balanced EPDs. Single out of a 13 month old mother.

323-January Ewe Lamb
CMG 10011 ~ QR or RR

B: 01/10/10
 S: TLF 0718 055525
 D: CMG 142 040309

Balanced EPDs.

324-January Ewe Lamb
CMG 10018 ~ QR or RR

B: 01/13/10 Tw
 S: TMD 8-106 060194
 D: CMG 236 049979

Balanced EPDs with high milk.

325-January Ewe Lamb
CMG 10005 ~ QR

B: 01/09/10 Tr
 S: TMD 8-106 060194
 D: CMG 182 049931

Very high, balanced EPDs. Top 5% in all traits.

326-February Ewe Lamb
CMG 10095 ~ RR

B: 02/23/10 Tw
 S: TMD 777J 053426
 D: CMG 181 049930

Balanced EPDs with high milk and pounds weaned.



**DEAN DAVISON PLAQUE...
 SHEPHERD'S AWARD**

The Dead Davison Trophy is awarded for attractiveness and cleanliness of the exhibitor's pens in honor of a long-time supporter of the Missouri Sheep Industry. Past winners include:

- 2009-Slack Club Lambs, North Manchester, IN
- 2008-Broadmead Farms, Amity, OR
- 2007-Tom Slack Suffolks, North Manchester, IN
- 2006-Wheaton Hampshires, Charlotte, MI
- 2005-Meadow Creek CLs, El Dorado, KS
- 2004-Mayo Suffolks, Live Oak, CA
- 2003-Ellerbrock Brothers Club Lambs, Atkinson, IL
- 2002-Rainbow Meadow Farms, Snowhill, NC
- 2001-Riverwood Farms, Powell, OH
- 2000-Riverwood Farms, Powell, OH
- 1999-Lost River Ranch, Howe, ID
- 1998-Lost River Ranch, Howe, ID
- 1997-Lost River Ranch, Howe, ID
- 1996-Lost River Ranch, Howe, ID
- 1995-Randy & Amy Wilt Suffolks, MO
- 1994-Lost River Livestock & Arrow "A" Ranch, Howe, ID
- 1993-Mary Anne Farao/Brad Payne, MO
- 1992-Mary Anne Farao/Brad Payne, MO
- 1991-Lost River Livestock, Howe, ID
- 1990-Barnes Ranch, Herald, CA
- 1989-Maiorino Livestock Co. Firebaugh, CA
- 1988-Huff Farms, Grass Valley, CA
- 1987-Barnes Ranch, Herald, CA
- 1986-Leland & Denise Wheaton, MI
- 1985-Bob & Joan Olsen-Good Shepherd Farm, Lapeer, MI

MIDWEST STUD RAM SALE

Consigned by
PRAIRIE LANE FARM

Henry Shultz & Family
6219 Audrain Rd 125, Centralia, MO 65240
573/682-5481 ~ Cell: 573/682-7127
Email: beckyshultz@msn.com
Web: www.prairielanefarms.net

**327-February Ram Lamb
Shultz 3002**

B: 02/10/10 Tw
S: MVF 8050 TW 058218
D: TMD 7-71 TR 053948

Production data and blood test results will be posted sale day. Pictures and information will be on the website after June 1st.

**328-February Ewe Lamb
Shultz 3001**

B: 02/10/10 Tw
S: MVF 8050 TW 058218
D: TMD 7-71 TR 053948

329-February Ewe Lamb

B: 02/17/10 Tw
S: MVF 8050 TW 058218
D: TMD 7-62 TR 053944

Consigned by
**SUNSET RIDGE
KATAHDINS**

Gregory G McGinnis
1464 Ridgeline Rd., Washburn, TN 37888
865/497-3085 ~ Cell: 865/310-7784
Email: sgmcginnis2003@yahoo.com

330-Yearling Ram

S: "Old Man" SBR 1154 036254
D: SWP 06-168 047688

This ram is a large framed and going to be a big ram.

331-January Ram Lamb

S: "Old Man" SBR 1154 036254
D: SWP 06-150 047675

332-February Ram Lamb

S: SWP 07-103 052689
D: TMD 7523 053396

Consigned by
JESSEE FARM

Kenneth D. Jessee ~ 276/794-9214
PO Box 592, St. Paul, VA 24283
Email: kenneth.jessee@gmail.com
VFSCP ~ 05/2006

333-February Ram Lamb

S: "The Old Man" SBR 1154 036254
Information Sale Day

334-February Ram Lamb

S: "The Old Man" SBR 1154 036254
Information Sale Day

Entries will be RR an sired by "The Old Man" and out of Country Oak Ranch or Bluegrass Katahdin dams.

KATAHDINS

Consigned by
**LINCOLN
UNIVERSITY FARM**

Attn: Dan Sommerer ~ 573/681-5540
PO Box 29, Jefferson City, MO 65101
Email: sommererd@lincolnu.edu
Web: www.lincolnuniversity.com

335-Yearling Ewe
Information Sale Day

336-Spring Ram Lamb
Information Sale Day

337-Spring Ewe Lamb
Information Sale Day

338-Spring Ewe Lamb
Information Sale Day

Consigned by
DOYLE WEAVER

14294 S 1375 Rd., Nevada, MO 64772
417/667-5294 ~ Cell: 417/321-4480
VFSCP ~ 05/2006

**339-January Ram Lamb
DW 10-11**

B: 01/24/10 Tw
S: MVF 7509 058212
D: TMD 0634 049054

Sire was a class winner at the '09 Midwest Sale.

SALE PHONES

SWINE BARN OFFICE:
660/530-5608

Suffolks, Horned & Polled Dorsets,
Hampshires, Shropshires,
Wether Sires/Dams
& Club Lambs

SHEEP BARN SHOW RING:
573/355-4756

Tunis, Southdowns, Rambouillets,
Corriedales, Montadales, Columbias,
Dorpers, Texels, Katahdins &
Natural Colored Sheep

GOAT BARN OFFICE:
573/355-1083

COMPUTER CENTER:
660/530-5612

573/819-9150 (Larry's Cell)



2nd Early Spring Katahdin Ram Lamb at the '09 Midwest Stud Ram Sale sold from Oklahoma to Missouri for \$600.

**340-January Ewe Lamb
DW 10-32**

B: 01/31/10 Tw
S: S: MVF 7509 058212
D: DW 5-02 043232

Sire was a class winner at the '09 Midwest Sale.
Granddam was Reserve Champion Ram in '04.

Consigned by
PETREA NELSON

#6 618 W Halsey, Maryville, MO 64468
712/579-2260
Email: petrea_mail@yahoo.com

341-Yearling Ram
Information Sale Day

342-Yearling Ewe
Information Sale Day

Consigned by
**FAHRMEIER
KATAHDINS**

Lynn & Donna Fahrmeier
13305 Flournoy School Rd
Wellington, MO 64097
816/934-8651 ~ Cell: 816/517-5049
Email: lfahrmeier@msn.com
VFSCP ~ 02/04/2000

**343-Yearling Ram
FAH 09 046 ~ RR**

B: 02/03/09 Tw
S: MVF 61059 047977
D: FAH 01 0023 027804

**344-Yearling Ram
FAH 09 047 ~ RR**

B: 02/03/09 Tw
S: MVF 61059 047977
D: FAH 01 0023 027804

MIDWEST STUD RAM SALE