

SOUTHDOWNS



Grand Champion, Senior Champion Southdown Fall Ram Lamb at the '09 Midwest Stud Ram Sale sold from California to Rhode Island for \$4000.

Consigned by
**HELD BROTHERS
SOUTHDOWNS**

Austin & Aaron Held
21320 477th Ave., Aurora, SD 57002
605/693-4203 ~ Cell: 605/690-7799
Email: mheld@svwireless.com

**601-Yearling Ewe
HBS 09-2904 QR X9701**

B: 01/13/09 Tw
S: Fielder 712 W9886
D: Held 06-3584 W5261

This ewe was in our show flock last year. Dam is the largest ewe in our flock. She too was a show ewe as a yearling. Fielder 712 has made us a very high quality set of show/replacement ewes.

**602-Fall Ewe Lamb
HBS 09-2130 RR**

B: 10/15/09
S: Fielder 712 RR W9886
D: HBS 05-2590 V9358

Sired by our Fielder stud-Reserve Champion at the '08 Midwest Sale. Dam goes back to Pleasant Springs 3870, a "Mr Clean Genes" son.

**603-January Ram Lamb
HBS 10-1047 RR**

B: 01/30/10 Tw
S: Fielder 712 RR W9886
D: HBS 03-3071 RR U7664

Very eye appealing lamb with great type and structure. Dam has produced numerous sheep for our show flock in the past. Dam goes back to McGuire bloodlines.

**604-February Ewe Lamb
HBS 10-1050 RR**

B: 02/04/10 Tw
S: Fielder 712 RR W9886
D: HBS 05-2536 RR V9348

Terrific balance and breed design. Expect to have her make a great addition to a show flock. Dam bloodlines include our most consist McGuire ewe 2269, maternal sire is Pleasant Springs 3870.

Consigned by
**HOWARD
SOUTHDOWNS**

Duron & Daniel Howard
Rt 2 Box 129A, Waurika, OK 73573
580/228-2641 ~ Cell: 405/517-7399
Email: sheep@dhowdranch.com
Web: www.dhowdranch.com

**605-Late Spring Ewe Lamb
Information Sale Day**

**606-Late Spring Ewe Lamb
Information Sale Day**

Consigned by
FIELDER FARMS

Robert & Debi Fielder
PO Box 374, McArthur, CA 96056
530/336-1038 ~ Cell: 707/484-6193
Email: ewedoc@yahoo.com

**607-Yearling Ram
Fielder 817 Y2308 ~ RR**

B: 04/15/09 Tr
S: Fielder 631 W2598
D: Splendorview 631 W5347

Young, flashy, long bodied, RR ram with great extension and still growing. Big hip and rack. Huge potential for stud and show.

**608-Yearling Ewe
Fielder L105 Y466 ~ QR**

B: 04/01/09
S: Fielder 755 X3727
D: Leah Fielder 743 X3578

Very young, growthy yearling ewe. Should do well in the show ring and as a brood ewe.

**609-Fall Ewe Lamb
Fielder L111 ~ RR**

B: 09/13/09 Tw
S: Fielder 755 X3727
D: PS 4470 V7325

Attractive fall ewe lamb out of one of Leah's foundation ewes. Great bloodlines and correct type.

**610-January Ram Lamb
Fielder 843**

B: 01/15/10 Tw
S: B&B Howard 4103
D: Fielder 752 X3573

Great framed ram lamb out of 4103. Dam is a very consistent producer and was in our show flock. DNA pending.

**611-March Ram Lamb
Fielder 857**

B: 03/09/10 Tw
S: B&B Howard 4103
D: Fielder 746 X3571

Very young yet but shows great promise. Dam produced 1st March Lamb at last year's National Sale. DNA pending.

**612-February Ram Lamb
Fielder 853**

B: 02/24/10 Tw
S: B&B Howard 4103
D: PS 5874 X8976

Young, correct and could be a barn burner! Must sell some great ones. DNA pending.

**613-January Ewe Lamb
Fielder 844**

B: 01/17/10
S: B&B Howard 4103
D: Forsee 808-111 Y270

Lots of muscle and style. Dam is very productive and sire is an Icon. DNA pending.

**614-February Ewe Lamb
Fielder 850**

B: 02/23/10 Tw
S: B&B Howard 4103
D: Leah Fielder 07-5 W8509

Dam was 3rd Yearling Ewe at NAILE. Grandsire was "Phantom"-the Grand Champion at the '05 NAILE. DNA pending.

**615-March Ewe Lamb
Fielder 862**

B: 03/15/10 Tw
S: B&B Howard 4103
D: PS 5707 X5669

Very young, but has great pattern and style. Watch her grow! DNA pending.

**616-March Ewe Lamb
Fielder L118**

B: 03/17/10 Tw
S: B&B Howard 4103
D: Leah Fielder 07-3 W8507

Also very young at time of entries. Should grown and show. Dam was in Leah's show string. DNA pending.

"C" BRANDS

Rams from whom consignors have made Semen Collections will be branded with a "C" above their Lot Number. This is intended to merely advise potential buyers that such rams have been Collected.

**Mail Bids & Delivery
Call Assistance
573/442-8257 Available**

MIDWEST STUD RAM SALE

Consigned by
OLDENBURG FARMS

Jeff Oldenburg
23103 N Broadway, Mulhall, OK 73063
405/649-2049 ~ Cell: 405/880-5857
Email: joldenburg@ditchwitch.com
www.clublambpage.com/oldenburgfarms

617-Yearling Ewe

Information Sale Day

We haven't figured out which to bring, but rest assure, she will be a good one.

618-Fall Ram Lamb

Information Sale Day

This ram lamb is extremely long bodied, square hipped with plenty of power. He is an October, RR ram, and sired by Oldenburg 7058.

619-February Ewe Lamb

Information Sale Day

620-March Ewe Lamb

Information Sale Day

621-March Ewe Lamb

Information Sale Day

Consigned by
WEDEL SOUTH DOWNS

Dennis Wedel
1774 Arrowhead Rd.
Moundridge, KS 67107
620/345-2881 ~ Cell: 620/747-0853
Email: wedelsouthdowns@yahoo.com
www.clublambpage.com/wedelsouthdowns

622-Yearling Ewe

Information Sale Day

623-Yearling Ewe

Information Sale Day

Quality you have come to expect.

Consigned by
**MADDOX
SOUTH DOWNS**

JJ & Kelly Maddox
9197 N 2320 Rd., Custer, OK 73639
580/593-2455 ~ Cell: 580/819-1272
Email: jkmaddox@pdi.net
Web: www.maddoxsouthdowns.com

624-Yearling Ewe

JK Maddox 9025 Y664 ~ QR

B: 03/13/09 Tw
S: Fritz Red 48 W7483
D: McGuire 608B W8234

625-Yearling Ewe

JK Maddox 9026 Y665 ~ QR

B: 03/13/09 Tw
S: Fritz Red 48 W7483
D: McGuire 608B W8234

SOUTH DOWNS

626-Yearling Ewe

JK Maddox 9027 ~ RR

B: 03/15/09
S: Fritz Red 48 W7483
D: JK Maddox 8019 X4556

Yearling ewes are all square hipped and loaded with muscle.

627-February Ram Lamb

Information Sale Day

628-February Ram Lamb

Information Sale Day

629-January Ewe Lamb

Information Sale Day

630-February Ewe Lamb

Information Sale Day

631-February Ewe Lamb

Information Sale Day

632-March Ewe Lamb

Information Sale Day

633-March Ewe Lamb

Information Sale Day

Lamb entries will be sired by Fritz Red 48, Fielder 801 or Lewis 18-08. We are planning to bring a strong set of lambs.

Consigned by
**McELVAIN SHEEP
FARM**

Mike McElvain
16514 E 325 N, Heyworth, IL 61745
309/828-3340 ~ Cell: 309/830-3340
Email: mcelvain@gte.net
Web: www.mcelvainlaw.com/sheepfarm

634-Yearling Ewe

McElvain 913 Y449 ~ QR

B: 02/23/09 Tw
S: "Silverado" CSU 8014 X5805
D: McElvain 617 W6704

A long bodied, yearling ewe.

635-Fall Ewe Lamb

McElvain 1002

B: 11/27/09 Tw
S: A&M GR60 W3786
D: McElvain 626 W9280

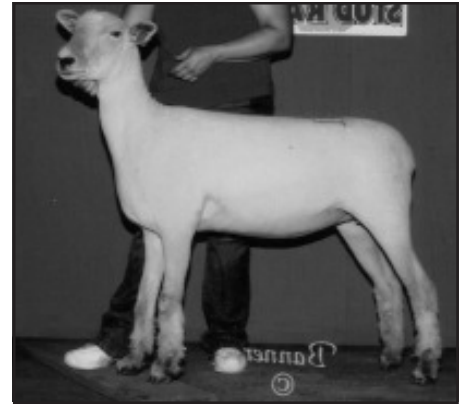
Line bred fall ewe lamb with excellent type.

636-February Ram Lamb

McElvain 1008 ~ RR

B: 02/03/10 Tw
S: B&B Howard 5098 V8742
D: McElvain 739 W9277

A super profile on a RR February ram lamb.



9th Southdown Yearling Ewe at the '09 Midwest Stud Ram Sale sold from Missouri to Florida at \$700.

**637-March Ewe Lamb
McElvain 1034**

B: 03/03/10 Tw
S: A&M GR60 W3786
D: B&B Howard 4006 V4111

Consigned by
A&M RANCH

Mark, Amy & Emily Johnson
2702 45th Rd., Sandwich, IL 60548
815/786-6495 ~ Cell: 815/274-6096
Email: aandmranch@aol.com
Web: www.aandmranch.com

638-February Ram Lamb

**S: "New Generation"
Information Sale Day**

This will be top RR son of the '08 NAILE Supreme Champion Ram.

639-February Ewe Lamb

**S: "New Generation"
Information Sale Day**

Futurity nominated.

640-February Ewe Lamb

**S: "New Generation"
Information Sale Day**

Futurity nominated.

641-March Ewe Lamb

**S: "New Generation"
Information Sale Day**

Futurity nominated. Check our website closer to sale time. Our "New Generation" lambs look really good.

**Substitute Entries
Will Be Identified
With a Line
Under the Lot Number**

MIDWEST STUD RAM SALE

SOUTHDOWNS



Reserve Junior Champion Southdown January Ram Lamb at the '09 Midwest Stud Ram Sale sold from Iowa to Texas for \$2800.

Consigned by
**WILSON'S
SKYVIEW FARM**

Derek & Jade Wilson
10951 Johnson Rd., Titusville, PA 16354
814/827-7934 ~ Cell: 814/758-1897
Email: wilsonhardwoods@verizon.net
Web: www.wilsonsskyviewfarm.com

**642-Yearling Ewe
WSFS 9024 Y3690 ~ QR**

B: 02/19/09
S: NSLS 7251 X1804
D: B&B Howard 1047 T6243

7251 is a "Topper" son, out of Splendorview 500AKA "Destiny", the Supreme Ewe at the '99 Midwest Sale. A really stout made ewe.

**643-Fall Ram Lamb
WSFS 9048 ET RR Y4062**

B: 09/17/09 Tw
S: "Cornerstone"
NSLS 7392 ET X3551
D: NSLS 7444 X3541

"Cornerstone" is an ET brother to "New Generation". 7444 is a "National Treasure" daughter. We have high hopes for this lamb. Look for him.

**644-Fall Ram Lamb
WSFS 9037 ET QR Y3677**

B: 09/16/09 Tw
S: "Cornerstone"
NSLS 7392 ET X3551
D: NSLS 7403 X3544

Sire was Champion Ram at the '08 Ohio Southdown Classic. 7403 was Champion Ewe at the '09 All-American, Supreme Ewe "NEYSS", and Champion Ewe at the '09 Ohio State Fair.

**645-Fall Ewe Lamb
WSFS 9057 Y3683 ~ RR**

B: 10/15/09
S: "Old School" SCF 883 X7609
D: Cole 327 W4442

This fall ewe lamb has great pattern, plenty of style and breed character. We purchased "Old School" in partnership with Repasky and McCrumbs from Billy Wade.

**646-February Ram Lamb
WSFS 0112 ~ RR**

B: 02/23/10 Tw
S: "Cornerstone"
NSLS 7392 ET X3551
D: Pleasant Springs 5762 X8132

Late February ram lamb with good breed character and a nice top. Don't miss this one.

**647-March Ram Lamb
WSFS 0120 ~ RR**

B: 03/02/10 Tw
S: "Cornerstone"
NSLS 7392 ET X3551
D: Tabek 619 W5494

We got Tabek 619 when we bought the Tabek flock last summer from Bryan Mason of VT. Thanks again Bryan.

**648-January Ram Lamb
WSFS 0056 ET QR**

B: 01/17/10 Tw
S: "Old School" SCF 883 X7609
D: NSLS 8030 ET X3532

8030 was 2nd Yearling Ewe in the open show at the '09 NAILE. Long bodied ram, straight out of our ET program.

**649-February Ewe Lamb
WSFS 0115 ~ RR**

B: 02/26/10 Tw
S: "Cornerstone"
NSLS 7392 ET X3551
D: NSLS 7296 X2909

7296 is a "Topper" daughter. We are keeping her twin brother to show. "Cornerstone" was Champion Ram at the '08 OH Southdown Classic.

**650-January Ewe Lamb
WSRS 0066 ET RR**

B: 01/18/10 Tw
S: "Old School" SCF 883 X7609
D: NSLS 8030 ET X3532

Wow 8030 produced 16 embryos when we flushed last fall. That's the only reason we are parting with this one. A full ET sister to the January ram lamb.

**651-March Ewe Lamb
WSFS 0128 ~ RR**

B: 03/06/10 Tw
S: "Cornerstone"
NSLS 7392 ET X3551
D: Oldenburg 6059 W5539

This March ewe lamb has good breed character and lots of style.

Consigned by
**SCRAMLIN
SOUTHDOWNS**

LC & Jackie Scramlin
2535 Wildwood, Holly, MI 48442
248/634-3043 ~ Cell: 248/894-5558
Email: jscramlin@hotmail.com

**652-Fall Ewe Lamb
Scramlin 1010**

B: 10/22/09 Tw
S: "Astronaut" Scramlin 527 V8086
D: Scramlin 616 W3626

A very thick topped, square hipped ewe.

**653-Fall Ewe Lamb
Information Sale Day**

We have a couple of good ewe by Scramlin 842, our "Big Ten" son out of "Spot On", our great Lewis ewe.

**654-February Ram Lamb
Information Sale Day**

We have several good ram lambs to offer. Will know more when blood tests are back.

**655-Spring Ewe Lamb
Information Sale Day**

We have some nice ewe lambs out of Splendorview 817-Reserve Champion at OH Sale last year.

Consigned by
**WILLWERTH
SOUTHDOWNS**

Tom Willwerth
1244 Xavier Ave., Eagle Grove, IA 50533
815/356-2182 ~ Cell: 815/689-5768
Email: wilwerth@wccta.net
Web: www.clublambpage.com/
willwerthsouthdowns

**656-Yearling Ram ~ RR
Information Sale Day**

**657-Yearling Ewe
Information Sale Day**

**658-Fall Ewe Lamb
Information Sale Day**

**659-January Ram Lamb ~ RR
Information Sale Day**

**660-February Ram Lamb ~ RR
Information Sale Day**

**661-February Ram Lamb ~ RR
Information Sale Day**

**662-March Ram Lamb ~ RR
Information Sale Day**

**663-January Ewe Lamb
Information Sale Day**

MIDWEST STUD RAM SALE

664-January Ewe Lamb

Information Sale Day

665-February Ewe Lamb

Information Sale Day

666-February Ewe Lamb

Information Sale Day

667-February Ewe Lamb

Information Sale Day

668-March Ewe Lamb

Information Sale Day

669-March Ewe Lamb

Information Sale Day

Consigned by **DON-AL'S**

Dona Miller ~ 920/756-3279
5815 Oakwood Rd., Brillion, WI 54110
VFSCP ~ 06/2002

670-February Ram Lamb DM 10-02

B: 02/12/10

S: M Williams 909 ET RR X8814

D: Howard 7125 X3631

This is a very fast growing, correct lamb that is sired by the 2nd January Ram Lamb in the '09 Midwest Sale. Will be tested by sale time.

Consigned by

MORAN SOUTHDOWNS

Marty & Amy Moran ~ 618/553-7333
7544 E 400th Ave., Newton, IL 62448
Email: moran @illiniwireless.com
Web: moransheep.com

671-Yearling Ram Moran 122 Y349 ~ RR

B: 01/10/09 Tr

S: McCrumb 316 V766

D: Moran 37 V6972

Great profile and thickness. We will have a top son also in this sale. Moran 122 is the last son for sale out of McCrumb 316.

672-Yearling Ram Moran 136

B: 03/29/09 Tw

S: "90 Proof" Forsee R07-090 X2105

D: Moran 86 W9613

Wow...describes this ram. He is young but powerful in his makeup. What a pair of stud yearling rams. Be sure to take a look.

673-Yearling Ewe Moran 132 Y356

B: 01/31/09 Tw

S: "90 Proof" Forsee R07-090 X2105

D: Moran 91 W9616

We are not showing or this ewe would not be entered. She is RR, long, thick and just outright good. Her mother was 1st Yearling at IL in '08.

SOUTHDOWNS

674-Yearling Ewe Moran 121 Y348

B: 01/09/09

S: "90 Proof" Forsee R07-090 X2105

D: RW Punchbowl 4113 V6910

Big, wide top, massive ewe. She has an excellent head and her mother always produces top sheep. She is RR. Check her out.

675-Fall Ram Lamb Moran 138

B: 09/10/09

S: "90 Proof" Forsee R07-090 X2105

D: Moran 80 W3085

Look out, here he comes. This stud prospect demands respect when he walks in. Big boned, beautiful type, neck like a lama, built like a bull. Don't miss this RR buck.

676-Fall Ewe Lamb Moran 137

B: 09/09/09

S: "90 Proof" Forsee R07-090 X2105

D: Moran 92 W9617

Nice show lamb prospect that will keep coming on for the later shows. She is thick, but will be big enough to compete.

677-Fall Ewe Lamb Moran 139

B: 09/12/09

S: "90 Proof" Forsee R07-090 X2105

D: Sooner 1052 T6221

Very nice lamb with a great look. Will make a great show lamb as well as a top brood ewe.

678-January Ram Lamb Moran 143

B: 01/27/09

S: Moran 122 Y349

D: Panning 6001 W9540

Check out this great son of our yearling stud that is consigned. Extended and put together. Take a close look at these genetics.

679-January Ram Lamb Moran 140

B: 01/16/10

S: Moran 128 Y353

D: Moran 91 W9616

Another top prospect out of the same ewe as our top yearling consigned here at this sale. Out of a son of "90 Proof" and a \$1100 dollar "Too Cool" daughter.



8th Southdown Yearling Ewe at the '09 Midwest Stud Ram Sale sold from Illinois to Texas for \$750.

Consigned by **MISTI WILLIAMS SOUTHDOWNS**

Misti Williams
5604 US 20 E, Ridott, IL 61067
815/232-2926 ~ Cell: 815/238-1750
Email: brenda@cota.org

680-January Ram Lamb M Williams 1016 RR

B: 01/03/10

S: "Maverick"

Pleasant Springs 5630 RR X4085

D: M Williams 0007 RR V2981

"Maverick" on a great show ewe...take a look!! He's straight topped, heavy muscled and correct.

681-February Ewe Lamb M Williams 1022 QR

B: 02/24/10 Tw

S: M Williams 913 ET RR X8818

D: M Williams 0704

An ET son of "Maverick" on a big brood ewe made a nice one. Sire is extremely big. This lamb is flashy.

Consigned by **BENTON CREEK FARM**

Tony & Deb Herrera
Max, Nicolas, Thaine, Anica & Kael
10195 Maplewood Rd., Cologne, MN 55322
952/466-5587
Email: bentoncreekfarm@embarqmail.com

682-Ewe Lamb Information Sale Day

We have over 100 lambs to pick from this year! All will be RR or QR and all of our sheep are free of spider and test NN.

683-Ewe Lamb Information Sale Day

All of our entries will have full Codon test data posted at our pens for your review.



the Sedalia Chamber of
Commerce for Room Reservations. Sedalia
Motels are generally sold out, but the
Chamber keeps a daily tab on Area Motels
with rooms available, or can refer you to
private homes near the fairgrounds that
rent rooms.

1/800/827-5295
660/826-2222

MIDWEST STUD RAM SALE

SOUTHDOWNS



Grand Champion, Senior Champion Southdown Yearling Ewe at the '09 Midwest Stud Ram Sale sold from California to Iowa at \$4000.

684-Ewe Lamb

Information Sale Day

As always, we fully guarantee our sheep-even beyond the sale guarantee. If you are not pleased, we will buy it back.

685-Ewe Lamb

Information Sale Day

Our breeding included genetics from Nancy Ferguson of Hillside Ranch, Schultz, Cole, Trudeau-Morgan and Tempel.

Consigned by DAVIS FAMILY SOUTHDOWNS

Dale Davis

3149 Co Rd 169, Cardington, OH 43315
419/864-5365 ~ Cell: 740/225-2070
Email: davisfarms3@netzero.net

686-Yearling Ewe

Davis 970 Y2006

B: 02/12/09

S: Willwerth L901 X4055

D: Davis 574 V4662

Out of our show flock.

687-Yearling Ewe

Davis 977 Y3600

B: 03/13/09 Tw

S: Willwerth L901 X4055

D: Shattuck 1208 U1161

688-Spring Ram Lamb

Information Sale Day

689-Spring Ewe Lamb

Information Sale Day

**Mail Bids & Delivery
Call Assistance
573/442-8257 Available**

Consigned by WOLKOW RANCH

Devon Wolkow

20147 435th Ave., DeSmet, SD 27231
605/854-3435 ~ Cell: 605/203-1149
Email: wolkowdorsets@hughes.net

690-Fall Ram Lamb Wolkow 955 ~ QR

B: 09/22/09 Tw

S: "Next Step" X3552

D: Wolkow 651 X969

691-Fall Ewe Lamb Wolkow 954

B: 09/13/09 Tw

S: "Next Step" NSLS 7393 ET X3552

D: MB Genetics 5-88A W1959

MB Genetics 5-88A has been a good producer for us. She was also our lead show yearling in '06.

Consigned by JIM DAVIS

24001 N 1900 E Rd., Odell, IL 60460
815/998-2359 ~ Cell: 815/228-5967

Email: jbdavis@maxwire.net

Web: www.clublambpage/
davissouthdownsandhamps

692-Yearling Ewe Davis 1755 RR Y534

B: 03/04/09 Tw

S: A&M 6R60 W3786

D: Davis 1565 W687

Looking for a show ewe? Don't miss this one. She was the 3rd Late Ewe Lamb at the '09 IL State Fair. Sister was Champion Ewe at the '10 IL Spring Sale. Sire was Johnson's 1st Ram Lamb at the '06 IL State Fair.

693-February Ram Lamb

S: "SilverRado"

Information Sale Day

We will be bringing a top RR ram lamb.

694-January Ewe Lamb

S: "SilverRado"

Information Sale Day

"SilverRado" sired the Champion Ram at IL, Champion Ewe at TN, High Selling Ewe at IL Spring Sale and Reserve Junior Champion Ram at OH Showcase, all in his first year.

695-February Ewe Lamb

S: "SilverRado"

Information Sale Day

696-March Ewe Lamb

S: "SilverRado"

Information Sale Day

697-March Ewe Lamb

S: "SilverRado"

Information Sale Day

Consigned by GRANDKIDS' INC

Melinda Ruby-Gruner

18010 N 93rd E Ave.

Collinsville, OK 74021

918/371-2779 ~ Cell: 918/406-3819

698-Yearling Ewe Grandkids' Inc 9-03 ~ RR Y732

B: 01/14/09 Tw

S: Gibson 7074 W8683

D: Sooner 1759 W512

699-Ram Lamb

Information Sale Day

Awaiting DNA results. I'll bring a ram lamb that is RR and straight Sooner Southdowns breeding.

Consigned by SINK SOUTHDOWNS

Sheila & Steve Sink

11172 E St Rd 38, Kirklint, IN 46050
317/758-0864 ~ Cell: 765/960-5045

Email: sheila.sink@att.net

Web: www.sinksouthdowns.com

700-Yearling Ewe

Information Sale Day

701-Yearling Ewe

Information Sale Day

702-February Ewe Lamb

Information Sale Day

Consigned by WYNCREST RANCH

Mindy Gibson

11152 Reid Rd., Houstonia, MO 65333
660/879-4447 ~ Cell: 660/281-1003

Email: wyncrest2003@yahoo.com

Web: www.wyncrestfarms.com

703-Fall Ram Lamb Gibson 9124 Y3788

B: 10/05/09

S: "Santana" Fielder 668 W8490

D: B&B Howard 5006 V7760

704-January Ram Lamb Gibson 10002 Y3780

B: 01/08/10

S: Sonner 1703 V6425

D: Fruendt 4124 V6710

705-February Ram Lamb Gibson 10037

B: 02/16/10

S: "Santana" Fielder 668 W8490

D: Fruendt 3117 U8650

706-March Ram Lamb

Information Sale Day

MIDWEST STUD RAM SALE

**707-March Ewe Lamb
Gibson 10044**

B: 03/07/10
S: "Santana" Fielder 668 W8490
D: Fruendt 4133 V6709

**708-March Ewe Lamb
Information Sale Day**

Please check out website for photos and further information on our entries.

Consigned by
OLSON BROTHERS

Noel, Carl, Will & Wyatt Olson
Rt 1 Box 8520, Warner, OK 74469
918/463-5119

Carl: 615/308-9411 ~ Noel: 615/218-6952
Email: olsonbrothers05@yahoo.com
VFSCP ~ 2000

**709-Yearling Ewe
Olson 897 Y676 ~ QR NN**

B: 12/01/08
S: B&G W91 X5896
D: Olson 711 X2586

This ewe was Reserve Champion Ewe at Tulsa open show for us last year.

**710-Yearling Ewe
MVF 7279**

B: 03/11/09 Tw
S: Willwerth K12
D: MVF 61006

**711-Yearling Ewe
MVF 7249**

B: 02/13/09
S: Willwerth K12
D: Pleasant Springs 4807

**712-January Ewe Lamb
Information Sale Day**

**713-February Ewe Lamb
Information Sale Day**

**714-March Ewe Lamb
Information Sale Day**

Consigned by
LABER LIVESTOCK

Mike & Teri Jo & Heath Laber
7042 N 107th, Longmont, CO 80504
303/652-2262 (Mike & Teri Jo)
970/580-0172 (Heath)
Email: hlaber82@aol.com
Web: www.laberlivestock.com

**715-February Ram Lamb
Information Sale Day**

**716-February Ram Lamb
Information Sale Day**

**717-March Ram Lamb
Information Sale Day**

SOUTHDOWNS

**718-February Ewe Lamb
Information Sale Day**

**719-March Ewe Lamb
Information Sale Day**

**720-March Ewe Lamb
Information Sale Day**

We will have information by the show/sale or check out our website for updates and pictures. All sheep will be Codon tested.

Consigned by
**LUITJENS SHOW
LAMBS**

Eric, Amanda & Grace Luitjens
2704 130th Ave., Burt, IA 50522
712/348-3145

**721-Yearling Ewe
S: Bullington 753
Information Sale Day**

Bullington 753 was Reserve Champion Ram at the '07 Cornbelt Sale.

**722-January Ram Lamb
S: Willwerth RJ02
Information Sale Day**

Willwerth RJ02 was Supreme Champion Ram at the '06 Cornbelt Sale.

**723-March Ram Lamb
S: A&M 9R130
Information Sale Day**

A&M 9R130 sired by "American Express"-2nd February Ram at the '09 Midwest Sale.

Consigned by
McGUIRE FARMS

Larry & Bruce McGuire
PO Box 825, Fairmont, MN 56031
507/447-2665 (Larry)
641/227-3146 (Bruce)

**724-Yearling Ram
Information Sale Day**

**725-Yearling Ewe
Information Sale Day**

**726-Yearling Ewe
Information Sale Day**

**727-Yearling Ewe
Information Sale Day**

**728-Yearling Ewe
Information Sale Day**

**729-January Ram Lamb
Information Sale Day**

**730-February Ram Lamb
Information Sale Day**



Junior Champion Southdown February Ewe Lamb at the '09 Midwest Stud Ram Sale sold from California to Minnesota at \$3500.

**731-February Ram Lamb
Information Sale Day**

**732-March Ram Lamb
Information Sale Day**

**733-March Ram Lamb
Information Sale Day**

**734-January Ewe Lamb
Information Sale Day**

**735-February Ewe Lamb
Information Sale Day**

**736-February Ewe Lamb
Information Sale Day**

**737-February Ewe Lamb
Information Sale Day**

**738-March Ewe Lamb
Information Sale Day**

**739-March Ewe Lamb
Information Sale Day**

Consigned by
**WEST CANYON
SOUTHDOWNS**

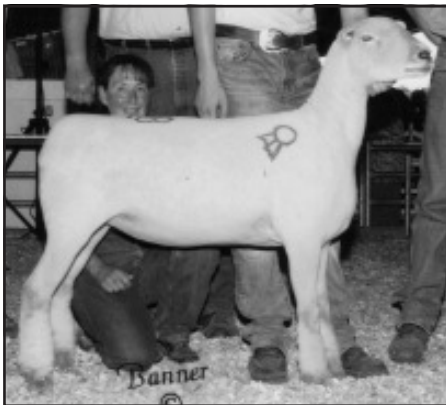
Mike E Gallegos
15720 North CR 15, Wellington, CO 80549
970/568-7841 ~ Cell: 970/556-5249
Email: boizot_emily@hotmail.com

**740-Fall Ewe Lamb
MRGWC036**

B: 11/21/09
S: Mapolyne Farms 08-1245 X4597
D: Oldenburg 6135 X3253

MIDWEST STUD RAM SALE

SOUTHDOWNS



Reserve Champion, Reserve Senior Champion Southdown Yearling Ewe at the '09 Midwest Stud Ram Sale sold from Wisconsin to Texas for \$1000.

741-January Ram Lamb MRGWC 031

B: 01/30/10 Tw
S: Mapolyne Farms 08-1245 X4597
D: MRG 222 X7192

742-February Ram Lamb MRGWC 032

B: 02/05/10 Tw
S: Oldenburg 7066 X570
D: MRG 223 X7193

743-February Ram Lamb MRGWC 033

B: 02/19/10 Tw
S: Oldenburg 7066 X570
D: MRG224 X7194

744-March Ram Lamb MRGWC 034

B: 03/04/10
S: ERG 17 W5640
D: MRG 225 X7195

745-January Ewe Lamb MRGWC 038

B: 01/23/10 Tw
S: Oldenburg 7066 X570
D: ERG 25 W5648

746-February Ewe Lamb MRGWC 039

B: 02/08/10 Tw
S: Oldenburg 7066 X570
D: ERG 23 W5646

747-February Ewe Lamb MRGWC 041

B: 02/15/10 Tr
S: ERG17 W5640
D: Oldenburg 7032 X555

748-March Ewe Lamb MRGWC 055

B: 03/05/10
S: Mapolyne Farms 08-1245 X4597
D: MRG 212 X7182

Consigned by ABELL'S SOUTHDOWNS

Patty Abell ~ 503/201-6904 (cell)
PO Box 64, Aurora, OR 97002
Email: abellfamilyfarm@yahoo.com

749-Yearling Ewe

Information Sale Day

750-February Ram Lamb

Information Sale Day

We have several nice RR ram lambs to choose from this year. Sire was 4th February Ram Lamb at the '09 Midwest Sale, purchased from Tom Willwerth.

751-February Ewe Lamb

Information Sale Day

We will be sending a nice, complete ewe lamb out of our Willwerth buck we purchased last year. They have really surprised us with their style.

Consigned by KIRBY KREEK FARM

Jim & Barbara Kirby
8709 S Perkins Rd., Stillwater, OK 74074
405/377-0621 ~ Cell: 405/742-8669
Email: jandbkirby@sbcglobal.net

752-Yearling Ewe

Kirby 977 Y3092 ~ RR

B: 03/01/09 Tw
S: Fritz Red 72 W7486
D: Kirby 557 V8622

753-Yearling Ewe

Kirby 979 Y3094 ~ RR

B: 03/01/09 Tw
S: Fritz Red 72 W7486
D: Kirby 4062 V2877

754-February Ram Lamb

Kirby 10-34 Y4921 ~ RR

B: 02/03/10 Tr
S: Forsee R08-41 X6539
D: Kirby 557 V8622

755-February Ram Lamb

Kirby 10-57 Y4928 ~ RR

B: 02/08/10 Tw
S: Fritz Red 72 W7486
D: Kirby 804 X4660

756-February Ewe Lamb

Kirby 10-27 Y4919 ~ RR

B: 02/01/10 Tw
S: Forsee R08-41 X6539
D: Cole 2392 U6344

757-February Ewe Lamb Kirby 10-45 Y4923 ~ RR

B: 02/05/10 Tr
S: Fritz Red 72 W7486
D: Kirby 642 W6819

Consigned by B&B HOWARD

Brandon Howard
20605 N Pine, Mulhall, OK 73063
405/649-2500 ~ Cell: 405/564-3893
Email: howardsheepfarm@yahoo.com
www.clublambpage.com/howard

758-Fall Ewe Lamb

Information Sale Day

759-Fall Ewe Lamb

Information Sale Day

Check out our entries on our website.

Consigned by PLEASANT SPRINGS SOUTHDOWNS

Arlan, Kent & Dan Spilde
2800 Wildflower Rd., Stoughton, WI 53589
608/772-3697 (Kent cell)
608/335-9288 (Dan cell)

760-February Ram Lamb

Information Sale Day

761-February Ram Lamb

Information Sale Day

762-February Ewe Lamb

Information Sale Day

763-February Ewe Lamb

Information Sale Day

764-February Ewe Lamb

Information Sale Day

We will bring high quality ram lambs and high quality futurity nominated ewe lambs! Likely will be a couple out of our ET program.

Consigned by LEWIS-RIEHLE SOUTHDOWNS

Randy Lewis ~ 641/220-3430 (cell)
13698 40th St., Lime Springs, IA 52155
Web: www.lewis-southdowns.com

765-Yearling Ewe

Information Sale Day

766-March Ram Lamb

Information Sale Day

767-January Ewe Lamb

Information Sale Day

768-February Ewe Lamb

Information Sale Day

MIDWEST STUD RAM SALE

769-March Ewe Lamb

Information Sale Day

Most entries will be out of "Max", who sired our \$2000 ram lamb at the '09 Midwest Sale and our Junior Champion Ewe at the '09 IN State Fair. We will also have a couple of entries out of "Stretch" who sired our Reserve Junior Champion Ewe at the '09 Midwest Sale and the Reserve Senior Champion Ewe at the '09 NAILE Junior Show.

Consigned by

NORTHERN STARR LIVESTOCK SERVICES

Krystal Repasky ~ 612/282-7782 (Jeff)
14580 Mystic Lake Dr NW
Prior Lake, MN 55372
Web: www.northernstarr.com

770-Yearling Ram

NSLS 8111 ET RR X8596

S: B&B Howard 4103 V4158

D: "Mustang Sally" NSLS 4058 V2069

One of the last "Mustang Sally" sons to sell! A big sheep with good breed type that McCrumb's used as a lamb.

771-March Ram Lamb

Information Sale Day

We have many options to choose from, but be certain, it'll be a good one. Check our website for updated info as the Midwest approaches.

SOUTHDOWNS

Consigned by

B&G LIVESTOCK

Paul R. Cassell & Ashley Craun
1686 Lovers Lane
Wytheville, VA 24382
540/290-7562 ~ Cell: 202/255-1764

772-Yearling Ram

Information Sale Day

773-Yearling Ram

Information Sale Day

774-Yearling Ewe

Information Sale Day

775-Yearling Ewe

Information Sale Day

776-Yearling Ewe

Information Sale Day

777-Yearling Ewe

Information Sale Day

778-March Ram Lamb

Information Sale Day



Reserve Junior Champion Southdown January Ewe Lamb at the '09 Midwest Stud Ram Sale sold from Iowa to South Dakota for \$800.

779-March Ewe Lamb

Information Sale Day

780-March Ewe Lamb

Information Sale Day



COME SEE US AT OUR USUAL LOCATION IN...

Manufacturers of Quality
Livestock Equipment!

SEDALIA

Proud Sponsor Of The

BEST CONSIGNMENT AWARDS

AT MAJOR
PUREBRED SHEEP SALES
THROUGHOUT AMERICA

Phone or Write Now
For Our Complete
Catalog of Sheep
Equipment!

*"Always Striving
to Improve"*

ORDER NOW!
Save Shipping Charges!

Order Your Needs Now and We
Will Deliver Your Items Free of
Charge to the...

MIDWEST STUD RAM SALE

...Or Other Major Sales
Where We Will Have Displays!

*We Are Proud to Salute
These Top Breeders
In This Manner*

TOWNSEND'S SALES

LIVESTOCK EQUIPMENT

4141 South 25 West
Trafalgar, Indiana 46181

KENNETH & LEE TOWNSEND, OWNERS

317/736-4047

MIDWEST STUD RAM SALE