

Consigned by  
**LOST RIVER  
LIVESTOCK**

Donna Mays  
PO Box 14, Howe, ID 83244  
208/767-3405 ~ Cell: 208/541-3405  
Email: lostriverdm@yahoo.com  
Web: www.lostriverlivestock.com

**2101-Yearling Ram  
"Trick Pony" ~ RR  
Lost River 09-689 583980**

B: 02/17/09 Tr  
S: "Ultra" Peifer 1267 550948  
D: Lost River 03-381 507737

"Trick Pony" is a full brother to "HoWhi" and "Whispering Horse" only a year younger. At the '08 National Jr Suffolk Show, "HoWhi" won Grand Champion Owned Ram as a lamb and later at NAILE was 1st February Ram Lamb for Billy MacCauley family. A picture of "HoWhi" is in the '09 and '10 Suffolk Breeders Directory. If you want the same genetics as "HoWhi" and "Whispering Horse" here is your opportunity to do so with a ram with bone, correct, thick and easy fleshing.

**2102-Fall Ewe Lamb  
Lost River 10-708 ~ RR**

B: 10/13/09 Tr  
S: "Ultra" Peifer 1267 550948  
D: Lost River 04-431 519781

**2103-Fall Ewe Lamb  
Lost River 10-709 ~ RR**

B: 10/13/09 Tr  
S: "Ultra" Peifer 1267 550948  
D: Lost River 04-431 519781

The above two fall ewe lambs are out of "Ultra" and an "Arrival" daughter. The last "Ultra" lambs to sell. "Ultra" was second in class to the Reserve Champion Ram at the NAILE and was a grandson of "Stroker Ace", a National Champion Ram for Peifer. What a pedigree.

**2104-January Ram Lamb  
Information Sale Day**

**2105-January Ram Lamb  
Information Sale Day**

The above two January ram lambs will be picked from a stud ewe family and be RR. Rams used for AI'ing on August 13, 2009 were "ThundeRR" a Cloud bred ram; "The Ticket" a BYU bred ram and "Edy" a Randy Meyers bred ram or a natural breeding from "Whispering Horse".

**2106-January Ewe Lamb  
Lost River 10-711 ~ RR**

B: 01/06/10 Tw  
S: "Whispering Horse"  
Lost River 08-649 574078  
D: Lost River 06-527 549796

This ewe lamb is sired by "Whispering Horse" and a daughter of "Reload", a Peifer bred ram. I am keeping a twin ewe lamb as a top replacement. Milkability along with longevity are very important along with correctness, bone and heads.

# SUFFOLKS

**2107-February Ewe Lamb  
Lost River 10-730 ~ RR**

B: 02/04/10 Tw  
S: "Whispering Horse"  
Lost River 08-649 574078  
D: Lost River 05-499 536317

I am keeping her twin as a top replacement, out of "Whispering Horse". This ewe lamb can be shown and later be one of your top producing ewes.

**2108-February Ewe Lamb  
Lost River 10-733 ~ QR**

B: 02/16/10 Tr  
S: "Whispering Horse"  
Lost River 08-649 574078  
D: Lost River 07-612 562022

Raising Suffolks since 1950. A closed flock that was one of the first flocks to be certified Scrapie free. Lost River genetics have predictability that meet the needs of both worlds of show ring and farm flock use.

Consigned by  
**HAWKINS FARM  
SUFFOLKS**

Joy Hawkins  
30737 Green Valley Rd., Shedd, OR 97377  
541/491-3750 ~ Cell: 541/990-2913  
Email: joyhawksuffolks@peoplepc.com

**2109-January Ram Lamb  
Hawkins 1009 ~ RR**

B: 01/10 Tw  
S: "Larry"  
Lofinks Suffolks 711 562410  
D: Hawkins 0804 572393

Wow! A smackdown daughter (show ewe) bred to the Lofink ram I bought in Sedalia. I wouldn't let this lamb go if I didn't know I could make another one. He's a keeper, but I can't keep them all!

**2110-February Ram Lamb  
Hawkins 1028 ~ RR**

B: 02/10  
S: "Smackdown's JB"  
Hawkins 0802 571150  
D: Hawkins 0338 506765

This is a very fast growing, big boned ram lamb that is quickly moving to the top of the heap. He is out of my great JB ram, my "Smackdown" keeper and a great old "Trigger" (Miatke daughter).

**2111-February Ram Lamb  
Hawkins 1047 ~ RR**

B: 02/10 Tw  
S: JCIN" 5 Star J 8153 RR 574298  
D: Hawkins 0816 572399

Another great lamb out of a "Smackdown" daughter and the 5 Star J ram that I bought in Sedalia. This is a very high headed ram lamb with lots of extension and stretch.



Grand Champion Suffolk Yearling Ram at the '09 Midwest Stud Ram Sale sold from California to Massachusetts for \$6000.

**2112-March Ram Lamb  
Hawkins 1058 ~ RR**

B: 03/10  
S: "Smackdown's JB"  
Hawkins 0802 571150  
D: Hawkins 0317 50755

This ram lamb has been impressive from the day he was born...a big, single out of another of the remaining few "Trigger" (Miatke) daughters. Although he's late born, do not overlook him. He will eventually be one of the bigger rams.

**2113-January Ewe Lamb  
Hawkins 1008 ~ RR**

B: 01/10 Tw  
S: "Larry"  
Lofinks Suffolks 711 562410  
D: Hawkins 0718 566655

This is a very complete "J Hawk"/"Trigger" granddaughter. Her maternal great grandmother is JB's mom. Not only is she pretty to look at, she also has tons of productivity in her genetic pool.

**2114-February Ewe Lamb  
Hawkins 1029 ~ RR**

B: 02/10  
S: "JCIN" 5 Star J 8153 RR 574298  
D: Hawkins 0824 572401

If I do not bring this lamb to the Midwest Sale, she will be a show ewe lamb for me. She looks the part of being a 5 Star J daughter, plus she has the added genetics of being out of a "Smackdown" (Benda) daughter, whose mother was a "Trigger" daughter.

**2115-February Ewe Lamb  
Hawkins 1046 ~ RR**

B: 02/10 Tr  
S: "Smackdown's JB"  
Hawkins 0802 571150  
D: Hawkins 0749 566661

Because this ewe lamb is later and a triplet, she may not be as big as others in her class, but you will be impressed by her style, not to mention her great genetics: ie Benda, Luxford, VanArkel, Miatke, LynLee.

# MIDWEST STUD RAM SALE

# SUFFOLKS



1st Fall Suffolk Ram Lamb at the '09 Midwest Stud Ram Sale sold from Illinois to Minnesota for \$2450.

## 2116-March Ewe Lamb Hawkins 1062 ~ RR

B: 03/10 Tw  
S: "Stormy's Star"  
Hawkins 0951 583852  
D: Hawkins 0818 572400

A super ewe lamb out of a "Smackdown" daughter (Benda) and the March ram lamb that I took to the NAILE. "Stormy's Star" is out of the 5 Star J Ram (JCIN) and JB's mom. I used him on the "Smackdown" show yearlings.

## Consigned by CORSON SUFFOLKS

John N Corson  
13320 E 900th St., Macomb, IL 61455  
309/837-2168 ~ Cell: 309/255-4606  
Email: corsonre@yahoo.com  
Web: www.corsonsuffolks.com

## 2117-Yearling Ewe Corson 09-501 ~ RR 588446

B: 01/16/09  
S: Crafts Suffolks 7-14 566039  
D: Corson 7501 RR 568712

This ewe was 1st January Ewe Lamb at the '09 IL State Fair.

## 2118-Yearling Ewe Information Sale Day

## 2119-January Ram Lamb Information Sale Day

## 2120-January Ram Lamb Information Sale Day

## 2121-February Ram Lamb Information Sale Day

## 2122-February Ram Lamb Information Sale Day

## 2123-January Ewe Lamb Information Sale Day

## 2124-January Ewe Lamb Information Sale Day

## 2125-February Ewe Lamb Information Sale Day

## 2126-March Ewe Lamb Information Sale Day

## Consigned by ANNUSCHAT FARMS, LLC

Nick & Ron Annuschat  
Rt 4 Box 177, Okarche, OK 73762  
405/263-7385 ~ Cell: 405/368-0455

## 2127-Yearling Ram Information Sale Day

## 2128-Yearling Ewe Information Sale Day

## 2129-January Ram Lamb Information Sale Day

## 2130-February Ram Lamb Information Sale Day

## 2131-February Ram Lamb Information Sale Day

## 2132-March Ram Lamb Information Sale Day

## 2133-January Ewe Lamb Information Sale Day

## 2134-February Ewe Lamb Information Sale Day

## 2135-February Ewe Lamb Information Sale Day

## 2136-February Ewe Lamb Information Sale Day

## 2137-March Ewe Lamb Information Sale Day

## 2138-March Ewe Lamb Information Sale Day

Our 2010 lambs are sired by Corson 08-510R, a "Transformer" son, who sired us a super set of lambs at the '09 Midwest Sale. We have lambs sired by Hawkins 0803, a Benda 7039 "Smackdown" son that we bought at the '08 Midwest Sale.

**Mail Bids & Delivery  
Call Assistance  
573/442-8257 Available**

## Consigned by WINDSWEPT RANCH

Chuck Ream ~ 707/459-0707  
15100 Hearst Rd., Willits, CA 95490  
Email: windswept ranch@starband.net

## 2139-Yearling Ram ~ NN QR Ream 9Z17 581778

B: 01/30/09 tw  
S: "Ezekiel" Ream 5C37 533648  
D: Ream 6025 546557

A full brother was Champion Ram at the '09 OH State Fair Jr Show for the Matthews. His dam is a daughter of the famous Luxford 1260A.

## 2140-Yearling Ram ~ NN RR Ream 9Z39 581783

B: 02/13/09 Tw  
S: "Ezekiel" Ream 5C37 533648  
D: Ream 5H40 533617

## 2141-Yearling Ram ~ NN QR Ream 9560 581798

B: 03/02/09 Tr  
S: "Charles" Ream 8Z46 572496  
D: Ream 5C38 533615

Sire was the National Champion Ram in '09. Dam, a triple to "Ezekiel", was Champion Ewe at the '06 CA State Fair. This guy is massive with huge bone.

## 2142-Yearling Ewe ~ NN QR Ream 9Z18

B: 01/30/09 tw  
S: "Ezekiel" Ream 5C37 533648  
D: Ream 6025 546557

A big, flashy, extreme "Ezekiel" daughter. Twin to Lot # 2139.

## 2143-Yearling Ewe Ream 9Z32 581803

B: 02/09/09 Tr  
S: "Ezekiel" Ream 5C37 533648  
D: Ream 6011 546543

A full sister to "Charles", '09 National Champion Ram. What a brood prospect!

## 2144-Yearling Ewe Information Sale Day

## 2145-February Ewe Lamb Information Sale Day

## 2146-February Ewe Lamb Information Sale Day

## Consigned by EYL SUFFOLKS

Denny Eyl ~ 303/841-4169  
9949 Tammy Ln, Parker, CO 80134  
Email: dennyeyl@aol.com

## 2147-Yearling Ram Eyl 9-12 583648 ~ RR NN

B: 02/08/09 Tw  
S: Wagner 04-14 533844  
D: Eyl 7-32 560893

# MIDWEST STUD RAM SALE

**2148-Yearling Ram**  
**Eyl 9-19 583649 ~ RR NN**  
B: 02/17/09  
S: Eyl 8-18 572607  
D: Eyl 3-25 506522

**2149-Yearling Ewe**  
**Eyl 9-9 583636 ~ QR NN**  
B: 02/07/09 Tw  
S: Wagner 04-14 533544  
D: Eyl 5-2 535681

**2150-Yearling Ewe**  
**Eyl 9-28 583643 ~ RR NN**  
B: 03/20/09 Tr  
S: Wagner 04-914 533844  
D: Eyl 2-17 487324

**2151-Yearling Ewe**  
Information Sale Day

**2152-February Ram Lamb**  
Information Sale Day

**2153-February Ram Lamb**  
Information Sale Day

**2154-February Ram Lamb**  
Information Sale Day

**2155-March Ram Lamb**  
Information Sale Day

**2156-February Ewe Lamb**  
Information Sale Day

**2157-February Ewe Lamb**  
Information Sale Day

---

*Consigned by*  
**WAGNER SUFFOLKS**

Bob & Jan Wagner  
18025 WCR 128, Nunn, CO 80648  
970/897-2894 ~ Cell: 970/420-2336  
Email: bob@wagnerranch.com  
Web: www.wagnersuffolks.com

---

**2158-Yearling Ram ~ RR NN**  
**Wagner 09-1303 584227**  
B: 02/18/09 Tw  
S: "Big Dipper"  
5 Star J 7146 RR 567774  
D: Wagner 1303 RR 533856

This is our top "Big Dipper" son. He has his father's outstanding front end extension. He walks on great feet and legs. He has plenty of bone and it great topped.

**2159-Yearling Ram ~ RR NN**  
**Wagner 09-3006**  
B: 02/13/09 Tw  
S: "Cheyenne"  
Wagner 07-3603 572097  
D: Wagner 3006 RR 559919

An outstanding "Cheyenne" son with great bone, a perfect top and all the width, depth and muscle of a great stud ram.

# SUFFOLKS

**2160-Yearling Ewe ~ RR NN**  
**Wagner 2209 584217**

B: 01/10/09  
S: "Big Dipper"  
5 Star J 7146 RR 567774  
D: Wagner 2206 RR 559930  
This "Big Dipper" daughter has size and style. Check her out. "Big Dipper" was Champion Ram at the '08 Midwest Sale.

**2161-Yearling Ewe ~ RR NN**  
**Wagner 4009 584215**

B: 01/06/09 Tw  
S: Wagner 08-3106 584214  
D: Wagner 4006 RR 548591  
This ewe is out of our top "Cheyenne" son from 2008. She is out of two of our best ewe families and she looks great.

**2162-January Ram Lamb**  
**Wagner 10-3402 ~ RR NN**

B: 01/16/10 Tw  
S: Wagner 09-2907 588313  
D: Wagner 3402 RR 505410  
09-2907 is our best ever son of "Cheyenne" and 3402 is one of our most productive ewes. This ram lamb certainly reflects the quality of his parents.

**2163-February Ram Lamb**  
**Wagner 10-1706 ~ RR NN**

B: 02/06/10 Tw  
S: "Big Dipper"  
5 Star J 7146 RR 567774  
D: Wagner 1706 559928  
We rarely bring February lambs, but this guy is an exception.

**2164-January Ewe Lamb**  
**Wagner 2410 ~ RR NN**

B: 01/17/10 Tw  
S: "Big Dipper"  
5 Star J 7146 RR 567774  
D: Wagner 1206 RR 559922  
An outstanding "Big Dipper" daughter. George Brothers breeding on the dam side.

---

*Consigned by*  
**FIVE STAR "J" FARMS**

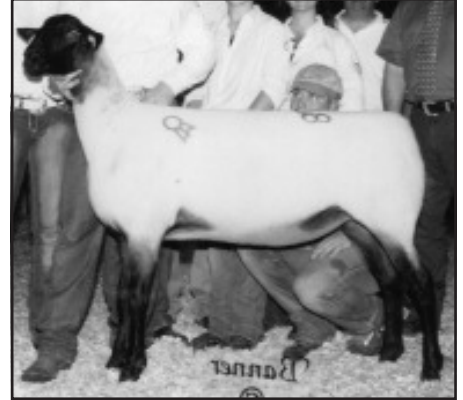
Richard & Cindy Jones & Family  
4439 N 250 W, Patoka, IN 47666  
812/779-5210 ~ Cell: 812/480-8545  
Email: jones@sigecon.net

**2165-Yearling Ram**  
Information Sale Day

**2166-Yearling Ram**  
Information Sale Day

**2167-Yearling Ewe**  
Information Sale Day

**2168-Yearling Ewe**  
Information Sale Day



Reserve Senior Champion Suffolk Yearling Ewe at the '09 Midwest Stud Ram Sale sold from Indiana to Missouri for \$3250.

**2169-Yearling Ewe**  
Information Sale Day

**2170-Yearling Ewe**  
Information Sale Day

**2171-Yearling Ewe**  
Information Sale Day

**2172-Yearling Ewe**  
Information Sale Day

**2173-Yearling Ewe**  
Information Sale Day

**2174-Ram Lamb**  
Information Sale Day

**2175-Ram Lamb**  
Information Sale Day

**2176-Ram Lamb**  
Information Sale Day

**2177-Ewe Lamb**  
Information Sale Day

**2178-Ewe Lamb**  
Information Sale Day

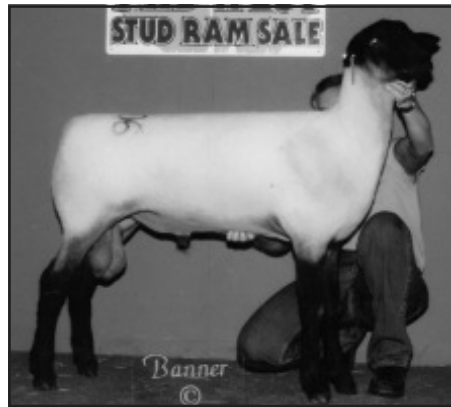
**2179-Ewe Lamb**  
Information Sale Day

As always, we will be bringing our top consignment to the Midwest Sale-Watch for them!!!

**"C" BRANDS**  
Rams from whom consignors have made Semen Collections will be branded with a "C" above their Lot Number. This is intended to merely advise potential buyers that such rams have been Collected.

# MIDWEST STUD RAM SALE

# SUFFOLKS



2nd Fall Suffolk Ram Lamb at the '09 Midwest Stud Ram Sale sold from Missouri to Minnesota at \$1400.

*Consigned by*  
**DON-AL'S SUFFOLKS**

Allan Miller ~ 920/756-3279  
5815 Oakwood Rd., Brillion, WI 54110  
VFSCP ~ 06/2002

**2180-Yearling Ram**  
**Don-Al's 9-582 RR NN**  
**583892**

B: 02/14/09 Tw  
S: Van Dyke Suffolks 803 RR 575001  
D: Don Al's 4-423 524354

This ram has exceptional muscle with a big, thick top and stands up good on his feet. Check him out.

## SALE PHONES

**SWINE BARN OFFICE:**  
**660/530-5608**

Suffolks, Horned & Polled Dorsets,  
Hampshires, Shropshires,  
Wether Sires/Dams  
& Club Lambs

**SHEEP BARN SHOW RING:**  
**573/355-4756**

Tunis, Southdowns, Rambouillets,  
Corriedales, Montadales, Columbias,  
Dorpers, Texels, Katahdins &  
Natural Colored Sheep

**GOAT BARN OFFICE:**  
**573/355-1083**

**COMPUTER CENTER:**  
**660/530-5612**  
573/819-9150 (Larry's Cell)

**2181-Yearling Ewe**  
**Don-Al's 9-588 RR NN**  
**583881**

B: 02/06/09 Tw  
S: Van Dyke Suffolk 803 RR 575001  
D: Don Al's 5-452 RR 539086

This ewe has breed type, body depth and thickness. A great ewe for any flock.

**2182-February Ram Lamb**  
Information Sale Day

**2183-February Ewe Lamb**  
Information Sale Day

Both of our lamb will be growthy lambs with style, length, size and will be tested by Sale Day.

*Consigned by*  
**ARNDT ACRES**

Ronald, Gail & Patrick Arndt  
11775 Co Rd 50, Norwood, MN 55368  
952/466-5876

**2184-March Ram Lamb**  
**Arndt Acres 1081**

B: 03/11/10 Tw  
S: Arndt Acres 780 RR 561466  
D: Arndt Acres 822 574934

822 is out of a Burke ram that goes back to "Stroker Ace" and "Land Lady". 780 goes back to "Blue Print", a Rambow Suffolks ewe.

*Consigned by*  
**REGGY FARMS**

The Glaesemanns  
56585 717 Rd., Fairbury, NE 68352  
402/729-2306 ~ Cell: 402/239-4005  
Email: reggyfarms@msn.com

**2185-Production Yrlg Ram**  
**Reggy 9415**

B: 02/07/09 Tw  
S: Slack 7187 568259  
D: Fisher 04-16 QR 532459

*Consigned by*  
**CHAPMAN**  
**SHEEP FARMS**

Mark & Deb Chapman  
5908 Sigler Rd., South Rockwood, MI 48179  
734/236-4259 ~ Cell: 734/755-3158  
Email: chapmansheep@hotmail.com

**2186-Production Fall Ram**  
**Chapman 09-181 ~ RR NN**

B: 09/19/09  
S: Kimm 03188-05016 536038  
D: Chapman 05-078 540539  
by High Plains 00105

**2187-Production Fall Ewe**  
**Chapman 09-175 ~ RR NN**

B: 09/15/09  
S: Chapman 08-104 577915  
D: Chapman 06-013  
by Chapman 04-085

*Consigned by*  
**KIMM SUFFOLKS**

Bob Kimm  
1636 W Ave., Dysart, IA 52224  
319/476-3875 ~ Cell: 319/290-8997  
Email: bbkimm@fctc.coop  
Web: www.breedingsheepage.com/kimm  
VFSCP ~ Certified 11/2008

**2188-Production Yrlng Ram**  
**Kimm 09033 RR NN**  
**584033**

B: 12/15/08  
S: Kimm 06022 RR NN 549943  
D: Bar Zel 2053-0421 541623

This ram's dam has been a stud ewe, raising two keeper rams prior to this guy. She goes back to "LeMonster" a Bierle ram. 9033 is the result of a son/mother mating and will sire like he looks, which is very complete. He scanned a 3.61 REA ad, to 135 lbs.

**2189-Production Yrlng Ewe**  
**Kimm 09061 RR NN 584265**

B: 12/27/08  
S: Kimm 06022 RR NN 549943  
D: Kimm 04052-06027 RR NN 550237

The largest framed ewe ever raised at Kimm Suffolks. Her dam is by the Henderson ram, Champion at the '05 NJSSA Show. She raised a nice set of twins for us in 2010. She is truly productive.

*Consigned by*  
**SEVERSON SUFFOLKS**

Brian Severson  
740 CR 146, Carpenter, WY 82054  
307/649-2307 ~ Cell: 307/649-2417  
Email: seversonsuffolks@rtconnect.net

**2190-February Ram Lamb**  
Information Sale Day

**2191-February Ram Lamb**  
Information Sale Day

 the Sedalia Chamber of Commerce for Room Reservations. Sedalia Motels are generally sold out, but the Chamber keeps a daily tab on Area Motels with rooms available, or can refer you to private homes near the fairgrounds that rent rooms.  
**1/800/827-5295**  
**660/826-2222**

# MIDWEST STUD RAM SALE

Consigned by  
**LOFINKS SUFFOLKS**

Larry Lofink  
6110 Westedt Rd., Cheyenne, WY 82009  
307/635-0608 ~ Cell: 307/631-2504

**2192-Yearling Ram**  
**Lofinks Suffolks 903**  
**582666 ~ RR NN**

B: 01/01/09 Tw  
S: Corson 07-510 RR 561742  
D: Lofinks Suffolks 608 RR NN 550923

60 day weaning wt. 85 lbs. 903 was our Champion Ram Lamb, Grand Champion Ram and member of our 1st Pair Ram Lambs, Champion Get of Sire, and Reserve Grand Champion Flock at the '09 WY State Fair. The dam of 903 was the Reserve Grand Champion Ewe at a Western Frontier Sale and was sired by Lofinks "Rooster" 319, the Grand Champion Ram at the '04 WY State Fair and Grand Champion Ram at the '05 National Western Stock Show. You will miss the boat if you don't look at what this ram has to offer.

**2193-January Ram Lamb**  
Information Sale Day

**2194-February Ram Lamb**  
Information Sale Day

**2195-January Ewe Lamb**  
Information Sale Day

**2196-February Ewe Lamb**  
Information Sale Day

All of our lamb entries will be RR NN and sired by: Lofink 739, Grand Champion Ram at the '08 WY State Fair; Lofink 903, Grand Champion Ram at the '09 WY State Fair; Lofink 904, Grand Champion & Supreme Champion Ram at the '10 National Western Stock Show in Denver.

Consigned by  
**CAHILL SUFFOLKS**

Pete Cahill  
17006 W Cahill Rd., Brimfield, IL 61517  
309/446-3237 ~ Cell: 309/678-0495  
Email: pcahill@elmnnet.net

**2197-February Ram Lamb**  
**Cahill 1910**

B: 02/02/10 Tw  
S: "Brutus II"  
Corson 09-6757B 583154

D: Troxtell 526 548249

"Brutus II" was the 3rd January Ram at the '09 NAILE. 1910 is a well patterned, heavy boned ram.

**2198-February Ram Lamb**  
**Cahill 2110**

B: 02/20/10 Tw  
S: "Tuf"  
Ruby Mountain 954 582318  
D: Cahill 15-8 574857

"Tuf" was the 2nd March Ram at the '09 NAILE. 2110 is a long bodied, sound ram.

# SUFFOLKS

**2199-March Ewe Lamb**  
**Cahill 2710**

B: 03/02/10 Tr  
S: "Tuf"  
Ruby Mountain 954 582318  
D: Admundson Suffolks 526-05  
539525

2710 is young and we wouldn't sell her if she wasn't one of triplets. Tremendous hip in this ewe.

**2200-March Ewe Lamb**  
**Cahill 3010**

B: 03/04/10 Tw  
S: "Tuf"  
Ruby Mountain 954 582378  
D: Cahill 1-6 551519

1-6 is one of our best ewes in the flock.

Consigned by  
**KEEVER SUFFOLKS**

Ryan & Kyle Keever  
RR 1 Box 30, Media, IL 61460  
319/746-6252 ~ 309/337-4075 (Ryan)

**2201-Yearling Ram**  
**Keever 9-22 QR 587494**

B: 03/04/09 Tr  
S: Pleasant Valley 1145 RR 555957  
D: Keever 4-0210 QR 520545

Sire is "Lawman". He sired the Champion Ram at Reno for Prairie Rose, last year. Dam is on our best producing ewes. She was also the dam of our 4th Place Ram at the '07 Midwest Sale that sold to Peterson's of ND. Excellent ram.

**2202-Yearling Ram**  
**Keever 9-25 RR 587490**

B: 03/07/09 Tw  
S: Pleasant Valley 1145 RR 555957  
D: Keever 7-28 RR 564374

"Lawman" on a "Casino Evil" daughter. Dam has a good set of twin ewe lambs this year. Beautiful head, correct, upstanding ram.

**2203-Yearling Ram**  
**Keever 9-26 RR 587491**

B: 03/07/09 Tw  
S: Pleasant Valley 1145 RR 555957  
D: Keever 7-28 RR 564374

Twin to 9-25 ram above. Also nice headed ram. Extended upfront. All these rams are young and still growing. Excellent rams that are well bred.

**2204-February Ram Lamb**  
Information Sale Day

**2205-February Ewe Lamb**  
Information Sale Day

**Mail Bids & Delivery**  
**Call Assistance**  
**573/442-8257 Available**



2nd Suffolk Yearling Ram at the '09 Midwest Stud Ram Sale sold from Nevada to Iowa for \$3500.

Consigned by  
**RUBY MOUNTAIN SHEEP CO, LLC**

Cynthia Huckins  
HC 36 Box 33, Spring Creek, NV 89815  
775/753-8327 ~ Cell: 775/741-0789  
Email: rubymtsheepco@yahoo.com  
Web: www.rubymountainssheepco.com

**2206-Yearling Ram**  
**Ruby Mtn 938 RR NN**  
**582300**

B: 02/24/09 Tw  
S: "Strok n It" Peifer 1191 525791  
D: Ruby Mtn 727 563063

This "Strok n It" son is a balanced, correct, exceptional ram. His mother is a "Tabasco Cat" daughter that has never disappointed us.

**2207-Yearling Ram**  
**Ruby Mtn 905 RR NN**  
**582313**

B: 02/01/09 Tw  
S: Ruby Mtn 722 566189  
D: Ruby Mtn 725 566201

"Strok n It" is a large influence in this ram in the pedigree top and bottom. 722 is the sire of "Mustang Sally", the National Sale Champion Ewe in Reno in '09.

**2208-Fall Ram Lamb ~ RR NN**  
**"Standing Ovation"**  
**Ruby Mtn 990 591144**

B: 09/23/09 Tw  
S: "Ovation"  
Ruby Mtn 860 512835  
D: Ruby Mtn 834 572794

Ruby Mtn 834 is the twin sister of "Make a Move", that was bought by the Hosking Family last year at the Midwest Sale, as a class winner. This fall ram is a class lamb that will be a great stud ram.

# MIDWEST STUD RAM SALE

# SUFFOLKS



Reserve Senior Champion Suffolk Yearling Ram at the '09 Midwest Stud Ram Sale sold from Indiana to Minnesota at \$2000.

## 2209-Ewe Lamb

Information Sale Day

We will be bringing a top quality ewe lamb that will work in the show ring and go on to be an outstanding stud ewe. We will only bring top quality.

Consigned by

## BAUMGARTNER FAMILY SUFFOLKS

Jerry Baumgartner

2220 71st St., Avoca, MN 56114  
507/335-7739 ~ Cell: 507/227-9408  
Email: jerryb@frontiernet.net  
Web: www.freewebs.com/  
baumgartnersuffolks/

## 2210-January Ram Lamb Baumgartner 1009 591407

B: 01/18/10 Tw  
S: JMG F8-8 582526  
D: Baumgartner 0840 581592

1009 is RR NN. Dam is sired by OVR 0643. He has sired alot of our sale sheep in the past few years.

## 2211-January Ewe Lamb Baumgartner 1006 591389

B: 01/16/10 Tw  
S: JMG F8-8 582526  
D: Baumgartner 0655 560051

1006 is RR NN. Sire is a Jeremy Geske bred ram, going back to a couple of Quam ewes. Dam goes back to the Benda ram that worked so good for us.

**Substitute Entries  
Will Be Identified  
With a Line  
Under the Lot Number**

## Consigned by CRAFTS SUFFOLKS

Don Craft  
307 West Columbia St.  
Flora, IN 46929

574/967-3091 ~ Cell: 765/490-6619  
Web: www.craftssuffolks.com

## 2212-Yearling Ram ~ RR NN Crafts 9-53

B: 03/27/09 Tw  
S: Begg 441 560831  
D: Crafts 7-18 563329

Here is a very young yearling ram out of one of our best Bunker Hill ewes who also goes back to Windfield breeding. The sire is the Begg ram who has done good for the Beggs of Ohio as well as the us. The grandsire has "Little Steven", "Silver Charm", "G.B. Herschel", the "Hawk", "Ruben Orwick" and Marten in his pedigree...it is power packed. This is one of the best rams I have ever sold.

## 2213-Yearling Ewe ~ RR NN Crafts 9-44 584826

B: 03/01/09 Tw  
S: Crafts 8-7 RR577368  
D: Crafts 5-25 538410

This is a real young yearling ewe. Her sire is one of our best Bunker Hill sons. The dam goes back to Silver Dollar, Mega and Blue Print. Her grandmother was our best Dan Bline ewe. Tom Burke looked at this ewe lamb last year and said she was one of the better ones he had seen in 2009.

## 2214-Yearling Ewe ~ QR NN Crafts 9-43 590961

B: 03/11/09 Tw  
S: Crafts 8-7 577368  
D: Crafts 58 537000

Here is another young yearling ewe and has the same sire as our yearling ewe above. The dam was 1st Slicked Ewe at the IN State Fair. Her sire is a Bunker Hill son.

## 2215-January Ram Lamb Crafts 10-7 ~ RR NN

B: 01/28/10 Tw  
S: Hodges 431 RR 579137  
D: Crafts 7-38 571721

Here is a nice patterned ram, out of the Hodge Ram we bought at the Ohio Sale in '09. He goes back to the Luxford 1230B ram on the sire side and a good Al Harwood ewe on the dam side. This ram's dam goes back to Bunker Hill 1631, who has done so good for us and other breeders.

## 2216-February Ram Lamb Crafts 10-23 ~ RR NN

B: 02/08/10 Tw  
S: Hodges 431 RR 579137  
D: Craft 7-7 563324

The three rams we have entered, all have the same sire, dam is a Bunker Hill daughter. Nice, correct rams and good on their feet and legs.

## 2336-February Ram Lamb Crafts 10-26 ~ RR NN

B: 02/10/10 Tw  
S: Hodges 431 RR 579137  
D: Heupel 3135 573797

The sire is the same as above ram. The dam is a ewe we bought from Marvin Heupel, a few years ago, who has done a good job for us. She has "CEO", "The Giant", "CEO's Hopy" in her pedigree.

## Consigned by WASHABAUGH SUFFOLKS

Robert Washabaugh ~ 309/875-3020  
PO Box 111, Galesburg, IL 61402

## 2217-Yearling Ram W-2-09 584668

B: 01/02/09  
S: Ream 6C58 547520  
D: W8-07 560583

## 2218-January Ram Lamb W-7-10 591282

B: 01/14/10 Tw  
S: Oak Hill 08 1129 QR 580239  
D: Bierle Suffolks 528 Gr  
540070 - QR NN

## 2219-February Ram Lamb W-19-10

B: 02/07/10 Tw  
S: Oak Hill 08 1129 QR 580239  
D: Keever 8-1 RR 578976

## 2220-February Ram Lamb W-21-10

B: 02/16/10 Tw  
S: Oak Hill 08 1129 QR 580239  
D: Keever 8-25 QR 578982

## 2221-January Ewe Lamb W-5-10 591274

B: 01/11/10 Tw  
S: Oak Hill 08 1129 QR 580239  
D: Cattron 947 QR 555982

## 2222-February Ewe Lamb W-22-10 591277

B: 02/04/10  
S: Oak Hill 08-1129 QR 580239  
D: Cattron 868 QR 526845

## 2223-February Ewe Lamb W-2-10

B: 02/16/10 Tw  
S: Oak Hill 08 1129 QR 580239  
D: Keever 8-29 RR 578983

**Mail Bids & Delivery  
Call Assistance  
573/442-8257 Available**

# MIDWEST STUD RAM SALE

*Consigned by*  
**BENDA SUFFOLKS**

Matt Benda  
58512 860th St., Jackson, MN 56143  
507/847-4784 ~ Cell: 507/841-2220  
Email: gmbenda@earthlink.net

**2224-January Ram Lamb**  
Information Sale Day

**2225-February Ram Lamb**  
Information Sale Day

**2226-January Ewe Lamb**  
Information Sale Day

**2227-February Ewe Lamb**  
Information Sale Day

Entries will be sired by "Magnum", "Karma", and "Cover Charge".

*Consigned by*  
**PUMPHREY FARMS**

Keith & Jane Pumphrey  
356 Chamberlain Rd.  
Walla Walla, WA 99362  
509/529-0140 ~ Cell: 541/760-7930  
Email: c\_pumphrey@hotmail.com  
Web: www.pumphreysuffolks.com

**2228-February Ram Lamb**  
B: 02/17/10 Tw  
S: "Shooter" Lost River 549793  
D: Syringa 703 560528

Full sister was last years Junior Champion Ewe at Reno and so was her dam, Syringa 703, in '06, which is sired by "Gunfire" that is the sire of the Champion Ram at Reno in '06. The sire "Shooter" also has "Gun Slinger" on the maternal side like Syringa 703, his paternal breeding is Peifer "Reload" to "Stroker Ace". This lamb twin brother will be retained for our breeding program.

**2229-February Ewe Lamb**  
Information Sale Day

**2230-March Ewe Lamb**  
Information Sale Day

*Consigned by*  
**JUNTUNEN  
FAMILY SUFFOLKS**

Duane Juntunen  
18659 439 Ave, Vienna, SD 57271  
605/628-2328 ~ Cell: 605/881-3374

**2231-Fall Ram Lamb**  
**Juntunen Family 9-F5**  
B: 09/27/09 Tw  
S: Dreher 8-1151 RR 579722  
D: Dreher 8-1105 579766

# SUFFOLKS

**2232-Fall Ewe Lamb**  
**Juntunen Family 9-F12**  
B: 10/02/09 Tr  
S: Dreher 8-1151 RR 579722  
D: Juntunen Family 7-63 RR 566508

**2233-Fall Ewe Lamb**  
**Juntunen 9-F18**  
B: 10/04/09 Tw  
S: D Swenson 7-08 573390  
D: Juntunen 6-83 RR 568704

*Consigned by*  
**AMUNDSON SUFFOLKS**

Bob Amundson  
2451 37th St NE., Larimore, ND 58251  
701/343-2862 ~ Cell: 218/779-7631

**2234-Yearling Ewe**  
**Amundson 936 586122**  
B: 02/02/09 Tw  
S: Dreher 7-0465 RR 569757  
D: Amundson 433 QR 532352

This ewe is high headed and has lots of volume.

**2235-Yearling Ewe**  
**Amundson 8204 586117**  
B: 12/27/08 Tw  
S: Dreher 7-0465 RR 569757  
D: Dreher 0440 RR 555548

Dreher 0440 is a high volume ewe that has one of the best lambs each year and her daughter 8204 will be the same way.

*Consigned by*  
**JERRY & REX QUAM**

8533 Co 30 Blvd.  
Wanamingo, MN 55983  
Jerry: (h)507/824-2274 ~(c)507/261-8201  
Rex: (h)507/824-2248 ~(c) 507/251-2650  
Web: www.quamsuffolksandhampshires.com

**2236-Yearling Ewe**  
Information Sale Day

**2237-January Ram Lamb**  
**RR NN**  
Information Sale Day

**2238-January Ram Lamb**  
**RR NN**  
Information Sale Day

**2239-February Ram Lamb**  
**RR NN**  
Information Sale Day



Junior Champion Suffolk February Ram Lamb at the '09 Midwest Stud Ram Sale sold from Minnesota to Indiana at \$3000.

**2240-February Ram Lamb**  
**RR NN**

Information Sale Day

We have our best set of buck lambs on the ground we have ever had. I know this sounds like a sales pitch, but they are deep. Our natural sired lambs by the Bracco and Luxford rams look good. Our ET lambs by Quam 8048, a Paasch "Gold Nugget" son, and the Lansing 9-313 ram also are coming on strong. At this time, it is too early to tell which one we will bring, but they will be good ones and also will be RR NN. More information will be posted on our website closer to the sale. We also hope to shoot some videos of our sale sheep as well.

**2241-March Ram Lamb**  
**RR NN**

Information Sale Day

Last fall, we bred our ewe lambs to "Little JeRR", then later sold him to Irwin & Mary Jackson in Canada. They look real good at this time and we may bring one of the top ram lambs to Sedalia.



Reserve Junior Champion Suffolk January Ram Lamb at the '09 Midwest Stud Ram Sale sold from Minnesota to California at \$1700.

# SUFFOLKS



Reserve Junior Champion Suffolk Late February Ewe Lamb at the '09 Midwest Stud Ram Sale sold from Indiana to Ohio for \$2000.

**2242-January Ewe Lamb**  
Information Sale Day

**2243-February Ewe Lamb**  
Information Sale Day

**2244-February Ewe Lamb**  
Information Sale Day

We will try to bring a good group of ewe lambs for someone to take home, show and be a great brood ewe. More information will be posted on our website, closer to the sale.

*Consigned by*  
**LUXFORD SUFFOLKS**

Ansel Luxford ~ 406/749-8049  
Box 350, Wilsall, MT 59086

**2245-Yearling Ewe**  
Information Sale Day

**2246-Yearling Ewe**  
Information Sale Day

*Consigned by*  
**EB SUFFOLKS**

Eric L. Bruns ~ 614/403-1436  
1000 W Powell Rd., Powell, OH 43065  
Email: riverwood\_farms@msn.com

**2247-Yearling Ram**  
Information Sale Day

**2248-Yearling Ewe**  
Information Sale Day

**2249-Fall Ewe Lamb**  
Information Sale Day

*Consigned by*  
**BUCKHAM FARMS**

George Buckham, Jr  
6508 West R Ave., Schoolcraft, MI 49087  
269/375-7676 ~ Cell: 269/271-1503  
Email: buckhamfarms@yahoo.com  
Web: www.buckhamfarms.com

**2250-Yearling Ram**  
Information Sale Day

Sired by our Van Dyke stud, one of the top rams in the '08 Midwest Sale.

**2251-Production Ram Lamb**  
Information Sale Day

Sired by our Michigan State stud.

*Consigned by*  
**VAN DYKE SUFFOLKS**

Jim Van Dyke  
38919 SD Hwy 34  
Wessington Springs, SD 57382  
605/539-9440 ~ Cell: 605/770-1095  
Email: seedstock@venturecomm.net  
Web: www.vandykesuffolks.net  
VFSCP ~ 02/1998

**2252-Yearling Ram**  
**Van Dyke Suffolks 934**  
**RR NN 584395**

B: 02/02/09  
S: "Windsor"  
Van Dyke 7066 RR 570305  
D: Van Dyke 6007 558111  
by "Saddle Tramp"

The "Windsor" offspring ewe exactly what I predicted them to be...long bodied, super straight in their lines, with great hips on correct feet and legs. This ram was a real stunner when he was born and certainly grew into a super stud prospect. He has a big foot to him with a lot of front end extension, a super top line, and a hip that is a hard find in today's world!!

**2253-Yearling Ram**  
**Van Dyke Suffolks 955**  
**RR NN 584397**

B: 02/14/09  
S: "Hercules"  
Kimm 8079-04227 530699  
D: Van Dyke 6005 558110  
by "Saddle Tramp"

Looking for a stud ram with rib, body, and pounds of red meat? This ram is very adequate in terms of size. He has a tremendous hip structure and a great top to him. His sire is the old Kimm ram we call "Hercules", perhaps the most dominant sire I have ever used! "55" as we call him, bred over 40 ewes last fall for Jim Grosz of Mitchell, SD and the results were outstanding! If you looking for a stoud made proven stud buck...look this guy up.

**2254-Yearling Ram**  
**Van Dyke Suffolks 963**  
**RR NN 584399**

B: 02/19/09  
S: Clift 0841 RR 572001  
by "Western Spur"  
D: Van Dyke 6041 558128  
by "Saddle Tramp"

I purchased the Clift ram at Reno in '07 and used him sparingly as a ram lamb. He simply stamped his lambs with a great pattern and a real show look to them. This ram and his twin brother below came from my 326 ewe line. Great Suffolk breed type and predictable genetics make these two stud bucks a must see.

**2255-Yearling Ram ~ RR NN**  
**Van Dyke Suffolks 964**

B: 02/19/09 Tw  
S: Clift 0841 RR 572001  
by "Western Spur"  
D: Van Dyke 6041 558128  
by "Saddle Tramp"

Be sure to check out my website for more information and pictures of my entries.

**2256-Yearling Ewe**  
**Van Dyke Suffolks 966**  
**RR NN 584342**

B: 02/22/09 Tw  
S: Clift 0841 RR 572001  
by "Western Spur"  
D: Van Dyke 6040 558127  
by "Saddle Tramp"

I have perhaps lost my mind for entering this yearling ewe. She comes from the 326 ewe line, and is the first female I have ever even considered selling from this ewe family. She is as pretty as a picture, super long bodied and you can't make them any straighter topped. Did I mention her twin brother is staying at home as a stud and two full geneic brothers sell above. Trust me when I say...stud ewe here! Perhaps the best female I have ever sold!

**2257-Production Ewe Lamb**  
Information Sale Day

I have been blessed with a super set of ewe lambs again, so I will bring one sired by either "Hercules" or the Knapke ram we purchased at the Midwest Sale last year. She will be from the same mold as my \$600 ewe lamb last year that sold to Ron Alves of CA.

*Consigned by*  
**FOSTER FARM**

Wyatt Foster  
21600 Sacajawea Rd., Sedalia, MO 65301  
660/826-4011 ~ Cell: 660/287-5182  
Email: brenda@bmwservices.net

**2258-Production Ram Lamb**  
**FF 0138**

B: 02/18/10  
S: D Howard 8023-08 577230  
D: FF 8-45-1 573034

Well muscled.

# MIDWEST STUD RAM SALE

Consigned by  
**BIERLE SUFFOLKS**

Cheryl Bierle ~ 641/344-9475  
1365 Hwy 34, Creston, IA 50801  
Email: bierlesuffolks@iowatelecom.net

**2259-Yearling Ram**  
**Bierle 8372B 587651**

B: 11/20/08  
S: Bierle 6640P RR 564951  
D: Bierle 517G QR 54066

Sire goes back to Silver Dollar "ASAP 2332 and "Spectacular". Dam goes back to "Mr. Perfect" and VanArkel "Priority". This is a big heavy muscled ram.

**2260-Yearling Ram**  
**Bierle 8728P RR 564951**

B: 11/08/08 Tw  
S: Bierle 6640 RR 564951  
D: Bierle 5163 RR 573960

6640P goes back to Rosenboom "ASAP". The sire's dam side has "Spectacular", "Baltimore" and "A Train". 8728P's dam is out of "HummeRR", who's sire is "CV's Promise"-a ram with lots of bone and body.

**2261-Yearling Ewe**  
**Bierle 9722B QR 591684**

B: 03/14/09  
S: "CV's Colorado Boy"  
Bierle 67414 RR 591682  
D: Bierle 6101G QR 591683

The sire, "CV's Colorado Boy", is by "CV" and a "Carnegie" dam. On the dam side, we have 5168P, "Carbon Copy" who's sire is Silver Dollar "ASAP 2470"-Also have "Protocol" and "Baltimore", lots of good genetics.

**2262-Yearling Ewe**  
**Bierle 8450G RR 587659**

B: 09/21/08  
S: Bierle 706W RR 567447  
D: Bierle 702W RR 587658

706W's sire was "TraveleRR", whose sire was "Carnegie". "TraveleRR" sired some of our best fall lambs. The dam, 702W goes back to "C.V. Promise" and "Priority". Both of these yearlings placed in the top 5 in their class at last year's Iowa State Fair. She is a big boned, big bodied ewe that could be shown slick shorn also.

**2263-Fall Ram Lamb**  
**Bierle 8123R**

B: 09/16/09 Tw  
S: Bierle 5022Y RR 564941  
D: Bierle 5810 RR 544096

The sire is a "C.V." son that has "Blue Print", "Arami", and "A Train". The dam of 5022Y has "LeMonster", "Baltimore", "Armain", and Benda's "Rushmore". The dam 5810R is one of our biggest "Chief Justice" daughters. She also has "Priority" and "A Train" in her genetics. A ram that has a lot of potential.

# SUFFOLKS

**2264-Fall Ram Lamb**  
**Bierle 7718P**

B: 09/05/09 Tw  
S: Bierle 5022Y RR 564941  
D: Bierle 6641P QR 584607

This ram has the same sire as 8123R. The dam, 6641P's sire is "CV's Promise" and on the dam's side we have "Carnegie", "Baltimore", "Priority" and "A Train". He has a lot of bone and body. He's good on his feet and has a good Suffolk head.

**2265-Fall Ewe Lamb**  
**Bierle 7178G 591687**

B: 11/23/09 Tw  
S: "CV's Colorado Boy"  
Bierle 6741Y RR 591682  
D: Bierle 8083G 591686

The sire, CV's Colorado Boy" is out of "CV Promise" who was the National Champion at NAILE in 2003. She has "Blue Print" and "Carnegie" on the sire side. The dam's side has "Protocol", who is a "Blue Print" son and a "CV" son. A late November fall ewe that is young but growing like a weed. 2259-Yearling Ram

**2266-Fall Ewe Lamb**  
**Bierle 7719P RR NN**

B: 09/05/09 Tw  
S: Bierle 5022Y RR 564941  
D: Bierle 6641P QR 584607

7719P is a twin to the fall ram lamb, 7718P. She is a lot better looking than him. DNA will be on pen cards. A very nice looking ewe lamb.

Consigned by

**WEG & I-80 FLOCK**

Bill Gergen ~ 402/540-7884  
1012 Rd 14, Geneva, NE 68361  
Email: wegergen@yahoo.com

**2267-Spring Ram Lamb**  
Information Sale Day

**2268-Spring Ewe Lamb**  
Information Sale Day

Consigned by

**WAYNE SKARTVEDT FAMILY**

30142 F Ave., Radcliffe, IA 50230  
515/893-2315 ~ Cell: 515/291-8551  
Email: wmskar@netins.net  
Web: www.breedingsheepage/skartvedt

**2269-Skartvedt 4339 584724**

B: 02/11/09  
S: Skartvedt 4368 577775  
D: Wagner 3307 QR 564904

2nd Slick Sheared Ram Lamb at the '09 IA State Fair. A super correct, massive ram sired by the big yearling ram sold in '09 Midwest Sale to Joel Shepherd from Utah.



3rd Suffolk January Ram Lamb at the '09 Midwest Stud Ram Sale sold from Pennsylvania to Iowa at \$3250.

**2270-Yearling Ram**  
**Skartvedt 4332 584711**

B: 01/26/09 Tw  
S: "Mr Classic"  
Heggemeier 07-55 577774  
D: Skartvedt 4020 526353

A very long bodied, flashy ram sired by "Mr Classic", who has been a very predictable sire of correct sheep.

**2271-Yearling Ewe**  
**Skartvedt 4354**

B: 02/26/09 Tw  
S: "Mr Classic"  
Heggemeier 07-55 577774  
D: Skartvedt 4191 556437

Dam is the twin sister to our Top Selling Ram at the '07 Western Frontier Sale.

**2272-Fall Ram Lamb**  
**Skartvedt 4366**

B: 09/26/09  
S: Skartvedt 4268 577775  
D: Skartvedt 4252 565877

Sired by the same ram as the first yearling ram above and out of the same ewe. As our 1st Slick Shorn Fall Ewe at NAILE in '09. The sire and dam are both out of the same ewe. Skartvedt 4103 a top "Perfect Gem" daughter. Being that line bred, he should be a predicable breeder.



the Sedalia Chamber of  
Commerce for Room Reservations. Sedalia  
Motels are generally sold out, but the  
Chamber keeps a daily tab on Area Motels  
with rooms available, or can refer you to  
private homes near the fairgrounds that  
rent rooms.

1/800/827-5295  
660/826-2222

# MIDWEST STUD RAM SALE

# SUFFOLKS



1st Suffolk March Ram Lamb at the '09 Midwest Stud Ram Sale stayed in Indiana at \$3000.

## 2276-Yearling Ewe Millers 9-54 RR NN 589151

B: 02/08/09 Tw  
S: "Leo" Millers 6-54  
S: "Otis" Millers 4-166  
D: Millers 2-186  
D: Millers 3-28  
S: Millers 1088  
D: Millers 5067

## 2277-Yearling Ewe Millers 9-137 QR NN 587639

B: 04/03/09 Tw  
S: "RRed Alert" Millers 5-43  
S: "Code RRed" Millers 1144  
D: Millers 0050  
D: Millers 6-26  
S: "Otis" Millers 4-166  
D: Millers 1094

## 2278-January Ram Lamb Information Sale Day

## 2279-February Ram Lamb Information Sale Day

## 2280-February Ram Lamb Information Sale Day

## 2281-January Ewe Lamb Information Sale Day

## 2282-February Ewe Lamb Information Sale Day

## 2283-February Ewe Lamb Information Sale Day

## 2284-March Ewe Lamb Information Sale Day

Spring lambs will be sired by Millers 8-92, a "RRed Alert" son; "Leo" Millers 6-54, an "Otis" son; or Eagle D8151, John's best breeding '08 ram and an interesting addition to our 35 plus year closed ewe flock. To ensure highest quality, lamb selection will be made closer to sale time.



6th Suffolk Late February Ram Lamb at the '09 Midwest Stud Ram Sale sold from North Dakota to Missouri at \$500.

## Consigned by LYN LEE FARMS

Gerald & Susan Clair~814/238-1233  
146 Clair Lane, State College, PA 16801  
Email: eclair4076@aol.com

## 2285-February Ewe Lamb Information Sale Day

## 2286-March Ewe Lamb Information Sale Day

## 2287-March Ewe Lamb Information Sale Day

These three ewe lambs will be solid, complete females with lots of growth eft. Good on their feet and legs with good breed type. Will test at least QR.

## Consigned by OAK HILL FARM

Pat Hodges Family  
Box 225, Julian, NE 68379  
402/242-2891 ~ Cell: 402/309-0008

## 2288-February Ram Lamb Information Sale Day

## 2289-February Ewe Lamb Information Sale Day

Lambs will be sired by Luxford 08-1273A or 09-1309A, Ansels lead ram at Reno.

## Consigned by DOUBLE H ACRES

Al & Marsha Harwood ~ 734/878-9670  
5505 Hinchey Rd., Howell, MI 48843  
Email: amharwood@aol.com

## 2290-Yearling Ewe OH 0906 QR 582003

B: 01/22/09 ET  
S: "Little Steve" GB 3965 RR 484087  
D: Double H 0617 551889

0617 is the only daughter of our '04 National Champion Ewe at NAILE, and part of our ET program.

## 2291-January Ram Lamb Double H RR P

S: Reau 452 RR 586158  
D: Double H 0519 RR 538054

Reau 452 is a big, massive ram with some style. He was Champion Ram at our National Suffolk Show last summer-his only time shown. 519 is a large, massive ewe, sired by our own ram. You should appreciate his size and correctness.

## 2292-February Ram Lamb Double H 1062 RR P

B: 02/16/10  
S: Double H 0545  
D: Double H 821 578818

Double H 0821 is a daughter of 0519 above. He is a very stylish lamb and good on his feet and legs. Double H 0545 was third in class at NAILE. His mother is twin sister to mother of Henderson's Champion Ram at the National Junior Show.

Consigned by

## MILLERS LIVESTOCK

Brenda Miller  
4657 Marthaler Rd NE  
Woodburn, OR 97071  
503/792-4502 ~ Cell: 503/910-0348  
Email: millerslivestock@netscape.com

## 2273-Yearling Ram Millers 9-36 RR NN 587609

B: 01/26/09 Tw  
S: "Leo" Millers 6-54  
S: "Otis" Millers 4-166  
D: Millers 2-186  
D: Millers 1105  
S: Millers 0102  
D: Millers 9189

We bred half of our replacement ewe lambs to this ram with great results. We'll be keeping a son and several daughters in the flock.

## 2274-Yearling Ram Millers 9-126 RR NN 587613

B: 03/23/09 Tw  
S: Millers 7-101  
S: Millers 6-99  
D: Millers 2-84  
D: Millers 6-77  
S: "Otis" Millers 4-166  
D: Millers 3-117

This rams sire goes back to MGI and he's from an excellent maternal line-dam, granddam, great granddam are all very large, high producing brood ewes.

## 2275-Yearling Ewe Millers 9-32 RR NN 587618

B: 01/20/09  
S: "Leo" Millers 6-54  
S: "Otis" Millers 4-166  
D: Millers 2-186  
D: Millers S-146  
S: "MGD" Millers 3-61  
D: Millers 1174

# MIDWEST STUD RAM SALE

**2293-March Ram Lamb  
Double H 1071 RR P**

B: 03/02/10 Tw  
S: Double H 0901 RRP 582005  
D: DH 0621 RRT 551891

0901 was Reserve Champion Ram at MI State Fair. His mother is from the ewe family of "Little Steven". His mother, DH 0621, is dammed by a "Little Steven" daughter. We sold a \$1500 yearling ram at the OH Sale from her last year.

*Consigned by*  
**YOUNG'S SUFFOLKS**

Shelby Young  
26359 W Hwy 69, Bethany, MO 64424  
660/425-7878 ~ Cell: 660/868-1022

**2294-Yearling Ram  
Young's Suffolks 913  
587352**

B: 02/06/09  
S: Steer 9011 566675  
D: Young's Suffolks 710 585806

**2295-Yearling Ram  
Annuschat y514 584099**

B: 02/17/09  
S: Corson 08-510R 573884  
D: Annuschat w445-w243 558608

**2296-Yearling Ram  
Young's Suffolks 910**

S: Oehlsen Farms 715 RR 559049  
D: Young's Suffolks 782 565810

**2297-Yearling Ram  
Young's Suffolks 995**

S: Oehlsen Farms 715RR 559049  
D: Young's Suffolks 537 542646

**2298-March Ram Lamb**

S: Oehlsen Farm 1003 RR 571959  
Information Sale Day

**2299-March Ram Lamb**

S: Oehlsen Farm 1003 RR 571959  
Information Sale Day

**2300-March Ewe Lamb**

S: Oehlsen Farm 1003 RR 571959  
Information Sale Day

**2301-March Ewe Lamb**

S: Oehlsen Farm 1003 RR 571959  
Information Sale Day

# SUFFOLKS

*Consigned by*  
**KNUTZEN SUFFOLKS**

Russ & Sue Knutzen  
2140 Rd 304, Edgar, NE 68935  
402/284-2328 ~ Cell: 402/469-6836  
Email: russandsue@windstream.net  
Web: www.knutzensuffolks.com  
VFSCP ~ 01/2002

**2302-Yearling Ewe ~ RR NN  
Knutzen 9V9 583864**

B: 02/14/09 Tw  
S: Lost River 08-660 574080  
D: Knutzen TA17 562609

Placed 8th in Early February Class at '09 NAILE. Sire is a Peifer "Ultra" son. Goes back to "Stroke N It". Dam goes back to "Ground Zero" and "BluePrint". See picture on our website.

**2303-February Ram Lamb  
RR NN**

Information Sale Day  
Will be a Luxford 1360A son.

*Consigned by*  
**OKLAHOMA  
STATE UNIVERSITY**

Matt Kennedy ~ 979/224-0081  
103 Animal Science, Stillwater, OK 74078

**2304-S/S March Ram Lamb  
OK State 06763**

Information Sale Day

**2305-S/S March Ewe Lamb  
OK State 6768**

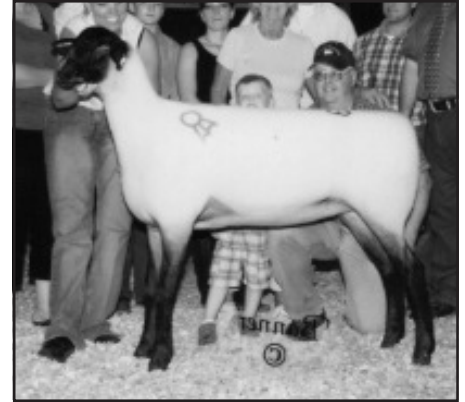
Information Sale Day

**2306-S/S March Ewe Lamb  
OK State 6769**

Information Sale Day



5th Suffolk Yearling Ewe at the '09 Midwest Stud Ram Sale sold from Montana to Maine at \$6250.



Grand Senior Champion Suffolk Yearling Ewe at the '09 Midwest Stud Ram Sale sold from Missouri to Pennsylvania at \$15,500.

*Consigned by*  
**HIGH POINT SUFFOLKS**

Richard & David Schambow  
2417 W Stark Rd., Janesville, WI 53545  
Richard: 608/743-1473  
Dave: 719/684-5150  
Email: dschambow@hotmail.com  
Web: www.highpointsuffolks.homestead.com

**2307-Yearling Ram  
Schambow 2958 584786**

B: 03/05/09 Tw  
S: "Red Ryder" 562969  
Peifer 1330 by "Strokin It"  
D: Luxford 1328 569513 by "Cobra"

A "Red Ryder" son out of an outstanding "Cobra" daughter. "Red Ryder" was Reserve Champion at Iowa State Fair as a lamb. Luxford 1328 is also the mother of Rex Quam's Luxford stud "First Impression". 2958 is a big level topped with a lot of mass.

*Consigned by*  
**DREHER SUFFOLKS**

Ron Dreher ~ 406/781-5107  
1825 20th Ave S., Great Falls, MT 59405  
www.dreherfamilysuffolks.com

**2308-Yearling Ram  
"Duke" Dreher 9-1071 RR  
584779**

B: Spring 2009  
S: Dreher 62-44 RR 559109  
D: Dreher 7-0479 562651

We have a terrific set of lambs by this buck and thus have decided we can sell him. See these lambs and "Duke" on our website in June.

**2309-Spring Ewe Lamb**  
Information Sale Day

# SUFFOLKS



Junior Champion Suffolk January Ewe Lamb at the '09 Midwest Stud Ram Sale sold from Pennsylvania to Delaware at \$2100.

*Consigned by*

## MACCAULEY SUFFOLK

Bill, Betsey, Chris & Kyle MacCauley  
4333 Steelville Rd., Atglen, PA 19310  
610/593-2907

Email: [maccauley@epix.net](mailto:maccauley@epix.net)  
Web: [www.maccauleysheep.com](http://www.maccauleysheep.com)

### 2310-Yearling Ewe MacCauley 2209 RR 582210

B: 02/10/09  
S: MacCauley 1955 RR 560191  
D: Catron 879 RR 540126

## SALE PHONES

SWINE BARN OFFICE:  
660/530-5608

Suffolks, Horned & Polled Dorsets,  
Hampshires, Shropshires,  
Wether Sires/Dams  
& Club Lambs

SHEEP BARN SHOW RING:  
573/355-4756

Tunis, Southdowns, Rambouillets,  
Corriedales, Montadales, Columbias,  
Dorpers, Texels, Katahdins &  
Natural Colored Sheep

GOAT BARN OFFICE:  
573/355-1083

COMPUTER CENTER:  
660/530-5612

573/819-9150 (Larry's Cell)

### 2311-Yearling Ewe MacCauley 2149 QR 582148

B: 01/11/09  
S: MacCauley 1917 RR 560177  
D: MacCauley 1863 QR 548367

### 2312-Yearling Ewe MacCauley 2167 RR 582167

B: 01/26/09  
S: Paasch 07-551 RR 571983  
D: MacCauley 1722 520757

### 2313-Fall Ewe Lamb MacCauley 2249 RR

B: 09/02/09  
S: Paasch 07-551 RR 571983  
D: Erstrom 4-24 QR 564523

### 2314-Fall Ewe Lamb MacCauley 2254 RR

B: 09/03/09  
S: Paasch 07-551 RR 571983  
D: MacCauley 2038 QR 573072

### 2315-January Ram Lamb MacCauley 2262 RR

B: 01/07/10 Tw  
S: MacCauley 2099 QR 573139  
D: MacCauley 1938 RR 560137

### 2316-January Ram Lamb MacCauley 2270 RR

B: 01/10/10  
S: Paasch 07-551 RR 571983  
D: Erstrom 6-77 QR 565690

### 2317-January Ewe Lamb MacCauley 2261 RR

B: 01/06/10 Tw  
S: MacCauley 1955 RR 560191  
D: MacCauley 1932 QR 560135

### 2318-January Ewe Lamb MacCauley 2278 QR

B: 01/11/10 Tw  
S: MacCauley 2099 QR 573139  
D: Erstrom 3-91 RR 563587

*Consigned by*

## HEGGEMEIER SHEEP CO & TOM BURKE SUFFOLKS

James Heggemeier ~ 530/218-0701 (cell)  
Tom Burke ~ 816/214-2787  
22230 St Rt 92, Platte City, MO 64079  
Email: [heggemeier@hotmail.com](mailto:heggemeier@hotmail.com)  
Web: [www.heggemeiersheepco.com](http://www.heggemeiersheepco.com)

### 2319-Yearling Ram Information Sale Day

### 2320-Yearling Ram Information Sale Day

### 2321-Yearling Ewe Information Sale Day

### 2322-Yearling Ewe Information Sale Day

### 2323-Fall Ram Lamb Information Sale Day

### 2324-Fall Ewe Lamb Information Sale Day

### 2325-Fall Ewe Lamb Information Sale Day

### 2326-January Ram Lamb Information Sale Day

### 2327-February Ram Lamb Information Sale Day

### 2328-March Ram Lamb Information Sale Day

### 2329-January Ewe Lamb Information Sale Day

### 2330-February Ewe Lamb Information Sale Day

### 2331-February Ewe Lamb Information Sale Day

### 2332-March Ewe Lamb Information Sale Day

Check out our website for entry information after June 4th.

*Consigned by*

## KNAPKE SUFFOLKS

Steve Knapke  
5188 US 33, Rockford, OH 45882  
419/363-3510 ~ Cell: 614/579-6841  
Email: [dustin.knapke@gmail.com](mailto:dustin.knapke@gmail.com)

### 2333-Yearling Ram Craft 921 RR 582263

B: 02/12/09 Tw  
S: Martens 459 NN RR 518417  
D: Craft 7-24 577703

This ram is a twin to the Reserve Champion Ewe at the '10 Ohio Suffolk Sale.

### 2334-Yearling Ram Knapke 3085-5532 ~ RR

B: 03/18/09  
S: Piefer Suffolks 1339  
D: Knapke Ewe

### 2335-Production Ram Lamb S: "Fresh Squeeze" Information Sale Day

# MIDWEST STUD RAM SALE