

# HAMPSHIRE



March Hampshire Ram Lamb at the '09 Midwest Stud Ram Sale sold from Texas to Iowa for \$10,500.

*Consigned by*  
**DANIELS CLUB LAMBS**

Brad & Gary Daniels  
4924 E Division Rd., Portland, IN 47371  
260/726-8639 ~ Cell: 260/251-1517  
Email: bldaniels@bright.net

**2751-March Sire**

**2752-March Dam**

*Consigned by*  
**DEE BROTHERS, LLC**

Graham & Evan Dee  
1510 Independence Dr.  
Northfield, MN 55057  
Graham: 612/207-1907  
Evan: 651/210-4812  
Email: graham@deebrothers.com  
Email: evan@deebrothers.com  
Web: www.deebrothers.com

**2753-Yearling Dam**

**2754-January Dam**

**2755-February Dam**



*Consigned by*  
**CLAIR CLUB LAMBS**

Brad Anderson  
4831 Buchanan Ave., Hawarden, IA 51023  
712/552-2138 ~ Cell: 712/541-3608  
Email: brada@iowalamb.com  
Web: www.clairclublambs.com

**2756-Yearling Dam**

**2757-February Dam**

*Consigned by*  
**HEWLETT CLUB LAMBS**

Ed, Connie & Curtis Hewlett  
4983 E Hwy 160  
Independence, KS 67301  
620/331-1475 ~ Cell: 620/330-4140  
Email: ech@terroworld.net  
Web: www.hewlett farms.com

**2758-March Dam**

**2759-April Dam**

*Consigned by*  
**FRANZ FARMS**

Todd & M.K. Franz & Family  
34153 520th Ave.  
Bingham Lake, MN 56118  
507/678-2347 ~ Cell: 507/822-1671  
Email: mkfranz@frontiernet.net  
Web: www.franzfarms.com

**2760-Fall Dam**

**2761-February Sire**

**2762-April Sire**

**2763-January Dam**

**2764-March Dam**

**2765-April Dam**

*Consigned by*  
**EBERT SHEEP FARM**

Jeff, Kerri, Christine & Monica Ebert  
10015 Flush Rd.  
St. George, KS 66535  
785/494-2436 ~ Cell: 785/458-9174  
Email: ebertj@wamego.net  
Web: www.ebertsheepfarm.com

**2766-March Dam**

Sired by our Ellerbrock ram. He has sired many champions, including the Supreme Champion Ewe at KS State Fair breeding show in '09. See our website for updates closer to sale time.

*Consigned by*  
**HINDMAN SHOW LAMBS**

Mike & Mark Hindman  
1648 670th Ave., Albia, IA 52531  
641/932-3635

**2767-March Sire**

**2768-March Dam**

*Consigned by*  
**SHROYER SHOW STOCK**

John & Lori Shroyer  
3296 Township Rd 35, DeGraff, OH 43318  
937/585-4010 ~ Cell: 937/935-0830  
Web: www.shroyershowstock.com

**2769-Yearling Sire**

**2770-March Sire**

**2771-January Dam**

**2772-February Dam**

**2773-March Dam**

**2774-April Dam**

*Consigned by*  
**HILL COUNTRY SHOW LAMBS**

Rodney & Sherri Yates  
PO Box 1491, Boerne, TX 78006  
830/249-3070 ~ Cell: 830/446-9031  
Email: hcsyates@kctc.com  
Web: www.hillcountrysuffolks.com

**2775-Yearling Sire**

**2776-Yearling Dam**

**Sires ~ Dams**

**MIDWEST STUD RAM SALE**

**2777-Yearling Dam**

**2778-Fall Sire**

**2779-January Sire**

**2780-February Sire**

**2781-February Sire**

**2782-March Sire**

**2783-April Sire**

**2784-February Dam**

**2785-February Dam**

**2786-March Dam**

**2787-March Dam**

**2788-April Dam**

*Consigned by*

**BEGALKA CLUB LAMBS**

Donnie Begalka ~ 605/873-9309  
46576 187th St., Castlewood, SD 57223

**2789-February Sire**

**2790-March Sire**

**2791-April Sire**

**2792-March Dam**

**2793-April Dam**

**2794-April Dam**

*Consigned by*

**TURNER SHOW STOCK**

Andy & Jeribeth Turner  
1220 Hynds Ranch Rd  
Van Alstyne, TX 75495  
903/482-6670  
Andy: 254/290-0420~Jeb:903/816-1208

**2795-Yearling Dam**

**2796-Yearling Dam**

**2797-Yearling Dam**

**2798-Yearling Dam**

# HAMPSHIRE

**2799-Yearling Dam**

**2800-January Sire**

**2801-February Sire**

**2802-March Sire**

**2803-February Dam**

**2804-March Dam**

**2805-March Dam**

**2806-April Dam**



February Hampshire Ram Lamb at the '09 Midwest Stud Ram Sale sold from Colorado to Ohio for \$1500.

**2818-February Dam**

*Consigned by*

**HAYS BROTHERS CLUB LAMBS**

Matthew Hays ~ 785/438-0339 (cell)  
3427 Linn Rd., Perry, KS 66073  
Email: hays.m@hotmail.com  
Web: www.hbclublambs.com

**2819-January Sire**

**2820-February Sire**

**2821-March Sire**

**2822-February Dam**

**2823-March Dam**

*Consigned by*  
**J&J SHOW LAMBS**

Jeff & Mike & Judy Beran  
W6650 Stateline Rd., Walworth, WI 53184  
262/736-3565 (farm) ~ 262/949-8568(cell)  
Email: showlambs@hotmail.com  
Web: www.jandjshowlambs.com

**2807-Yearling Sire**

**2808-January Sire**

**2809-February Sire**

**2810-March Sire**

**2811-April Sire**

**2812-January Dam**

**2813-February Dam**

**2814-March Dam**

**2815-April Dam**

*Consigned by*

**McLAIN CLUB LAMBS**

Kaleb McLain  
33899 WCR 55, Gill, CO 80624  
970/351-0768 ~ Cell: 970/302-2733

**2816-Yearling Sire**

**2817-Fall Dam**



**Sires ~ Dams**

# MIDWEST STUD RAM SALE

# HAMPSHIRE



1st Hampshire February Ram Lamb at the '09 Midwest Stud Ram Sale sold from Wyoming to Minnesota for \$10,000.

*Consigned by*  
**FAIRLEY FARMS**

Brian Fairley  
45255 313 St., Gaysville, SD 57031  
605/267-4877 ~ 605/660-8025  
Email: fairley@hotmail.com  
Web: www.fairleyfarms.com

**2824-April Sire**

**2825-April Sire**

*Consigned by*  
**BURCH LIVESTOCK**

Kolby & Micky Burch  
28425 340th St., Coon Rapids, IA 50058  
712/684-5103 ~ Cell: 307/247-3043  
Email: burchlivestock@gmail.com

**2826-March Sire**

**2827-March Sire**

**2828-April Sire**

**2829-April Sire**



**2830-March Dams**

**2831-April Dam**

*Consigned by*  
**PIRTLE FARMS**

Randy, Susan, Aspen & Cassie Pirtle  
397271 W 400 Rd., Copan, OK 74022  
918/532-4553 ~ Cell: 918/440-4553  
Email: pcopan1@aol.com  
Web: www.clublambpage.com/pirtle  
VFSCP ~ 08/2001

**2832-Yearling Sire**

**2833-Yearling Dam**

**2834-March Sire**

**2835-February Dam**

**2836-March Dam**

Will be out of "Starsky" or our new linebred "Composure" ram.

*Consigned by*  
**DESPAIN CLUB LAMBS**

Larry DeSpain  
PO Box 292, Hinton, OK 73047  
405/542-3256 ~ Cell: 405/545-0511

**2837-March Dam**

**2838-April Dam**

*Consigned by*  
**HULL CLUB LAMBS**

Justin Hull ~ 541/419-3021 (cell)  
25281 Alfalfa Mkt Rd., Bend, OR 97701  
Email: hullclublambs@gmail.com  
Web: www.hullclublambs.com  
VFSCP ~ 07/2004

**2839-Yearling Sire**

**2840-February Sire**

**2841-March Sire**

**2842-April Sire**

**2843-February Dam**

**2844-February Dam**

**2845-March Dam**

**2846-March Dam**

**2847-April Dam**

**2848-April Dam**

*Consigned by*  
**ROCKIN' C FARMS**

Jody Clem  
671 FM 179, Tahoka, TX 79373  
806/924-7667 ~ Cell: 806/441-3009  
Email: jclem@lyntegar.com  
Web: www.clublambpage.com/rockincfarms  
VFSCP ~ 2005

**2849-March Sire**

**2850-April Sire**

**2851-March Dam**

**2852-April Dam**

*Consigned by*  
**IMAGE CLUB LAMBS**

Scott Layne  
4113 Beyer Park Dr., Modesto, CA 95357  
209/549-7849 ~ Cell: 209/402-7235  
Email: sdlayne@sbcglobal.net  
Web: www.layneimage.com

**2853-March Sire**

**2854-February Dam**

**2855-March Dam**

*Consigned by*  
**GLASSCOCK CLUB LAMBS**

Guy Glasscock  
9200 Hwy 84 E, Zephyr, TX 76890  
325/739-1010 ~ Cell: 325/642-3131  
Email: guyslamb11@aol.com  
Web: www.glasscockclublambs.com

**2856-Yearling Sire**

**2857-Yearling Dam**

**Sires ~ Dams**

**MIDWEST STUD RAM SALE**

*Consigned by*  
**KENNEDY CLUB LAMBS**

Matt Kennedy ~ 979/224-0081 (cell)  
109 Animal Science, Stillwater, OK 74078  
Email: matt@kennedyclublambs.com  
Web: www.kennedyclublambs.com

**2858-April Sire**

*Consigned by*  
**WATTONVILLE  
CLUB LAMBS**

Jason Wattonville ~ 515/203-5667  
54254 Hwy 210, Huxley, IA 50124  
Email: jdwattonville@gmail.com  
Website: Wattonville Club Lambs on Facebook

**2859-January Sire**

*Consigned by*  
**GREINER CLUB LAMBS**

Ted Greiner ~ 641/660-6839 (cell)  
25517 330th, Keota, IA 52248  
Email: tedgreiner@gmail.com

**2860-February Sire**

**2861-January Dam**

*Consigned by*  
**WHEATON  
HAMPSHIRE**

Lee, Denise, Megan & Brant Wheaton  
2297 W Vermontville  
Charlotte, MI 48813  
517/541-5601 ~ Brant: 517/203-9911  
Email: leland.wheaton@gmail.com  
Web: www.wheatonhampshires.com

**2862-Fall Sire**

**2863-Fall Dam**

**2864-January Sire**

**2865-January Sire**

**2866-February Sire**

**2867-February Sire**

**2868-March Sire**

**2869-March Sire**

**2870-April Sire**

# HAMPSHIRE

**2871-April Sire**

**2872-January Dam**

**2873-January Dam**

**2874-January Dam**

**2875-January Dam**

**2876-February Dam**

**2877-February Dam**

**2878-February Dam**

**2879-March Dam**

**2880-March Dam**

**2881-March Dam**

*Consigned by*  
**McLAUGHLIN/GRIFFIN  
SHEEP**

Willard McLaughlin  
400 CR 220, Craig, CO 81625  
Willard: 970/629-0263  
Kelly: 970/629-1196  
Email: kmclaughlinsheep@live.com  
Web: www.mclaughlin/griffinsheep.com

**2882-Fall Sire**

**2883-Fall Dam**

**2884-January Sire**

**2885-February Sire**

**2886-March Sire**

**2887-April Sire**

**2888-January Dam**

**2889-February Dam**

**2890-March Dam**

**2891-April Dam**



1st Hampshire Yearling Ram at the '09 Midwest Stud Ram Sale sold from Michigan to Iowa for \$8400.

*Consigned by*  
**RUDIN CLUB LAMBS**

Gene & Phillis Rudin ~ 319/642-3292  
348 W Washington St., Marengo, IA 52301

**2892-January Sire**

**2893-February Sire**

**2894-March Sire**

**2895-April Sire**

**2896-January Dam**

**2897-February Dam**

**2898-March Dam**

**2899-April Dam**



**Sires ~ Dams**

**MIDWEST STUD RAM SALE**

# HAMPSHIRE



Supreme Champion Hampshire January Ram Lamb at the '09 Midwest Stud Ram Sale sold from Oklahoma to Illinois at \$13,000.

*Consigned by*  
**CRAZY H CLUB LAMBS**

Jason Heeg  
PO Box 217, Shepherd, MT 59079  
406/947-2093 ~ Cell: 406/855-1478  
Email: crazyhclublams@live.com

**2900-February Sire**  
**Crazy H Club Lambs 026**

**B:** 02/08/10 TW QR NN  
**S:** Tomlinson/Huber 0645  
**D:** Leonhardt 6031

A wide square docked lamb with plenty of style and muscle. The '09 model is in our ram pen and all of his lambs are in the keeper pen.

*Consigned by*  
**HARMS SHOW LAMBS**

Larry, Barb, Brian Harms  
27638 E 2450 N Rd  
Lexington, IL 61753  
309/365-3381 ~ Cell: 309/825-3485

**2901-March Sire**



**2902-April Sire**  
**Harms B-700 RR NN**

**B:** 04/04/10  
**S:** "Bart"  
**D:** Harms T-700

The sire, "Bart" was Simpson's 1st February Ram Lamb at the '09 Midwest Sale. Dam is sired by "Ted" the Greiner "Toga" son we purchased at the '08 Midwest Sale.

**2903-February Dam**

**2904-March Dam**

*Consigned by*  
**NOC SHEEP CENTER**

Bart Cardwell  
1220 E Grand, Tonkawa, OK 74653  
580/628-6497 ~ Cell: 580/716-2550  
Email: bart.cardwell@north-ok.edu  
Web: www.north-ok.edu/agriculture-science1

**2905-Yearling Dam**

**2906-February Dam**

**2907-February Dam**

*Consigned by*  
**OTT CLUB LAMBS**

Brad Ott  
RR 2 Box 41, Fairview, OK 73737  
580/227-2860 ~ Cell: 580/794-9324  
Email: bott@pdi.net  
Web: www.ottclublams.com

**2908-January Sire**

**2909-February Sire**

**2910-February Sire**

**2911-March Sire**

**2912-January Dam**

**2913-March Dam**

**2914-March Dam**

**2915-April Dam**

*Consigned by*  
**DEMAG SHEEP CO**

Matt Debrick  
PO Box 390, Scotts Mills, OR 97375  
503/873-0218 ~ Cell: 503/984-4072  
Email: debrickm@hotmail.com  
Web: www.demagsheepco.com

**2916-March Sire**  
**Demag 155**

**S:** RSC Foose  
Foose ("Smart Money" x "Enron"). "Foose" is our \$15,000 buck from Rules that we bought in '08.

**2917-March Sire**  
**Demag 199**

**S:** RSC Foose  
This entry was our barn favorite all year long.

*Consigned by*  
**FALLESON-DEMAG CLUB LAMBS**

Jake Falleson & Matt Debrick  
PO Box 28, Crabtree, OR 97335  
541/979-0868 (cell)

**2918-February Sire**

Sired by a top son of "Outlook"!

*Consigned by*  
**FALLESON SHEEP FARM**

Jake Falleson ~ 541-979-0868 (cell)  
PO Box 28, Crabtree, OR 97335

**2919-Spring Ram Lamb**

**2920-Spring Ram Lamb**

**2921-Spring Ewe Lamb**

**2922-Spring Ewe Lamb**

Sired by our Rule ram that was sired by "Smart Money".

*Consigned by*  
**ALLISON MCGOLDEN CLUB LAMBS**

Allison McGolden ~ 580/323-7198  
Box 744, Arapaho, OK 73620  
Email: amcgolden@yahoo.com  
www.allisonmcgoldenclublams.com

**2923-April Sire**

**2924-March Dam**

**2925-April Dam**

**Sires ~ Dams**

**MIDWEST STUD RAM SALE**

*Consigned by*  
**MORRIS-PIERSON  
CLUB LAMBS**

Leon Morris  
10617 S Jardot, Perkins, OK 74059  
405/547-2333 ~ Cell: 405/612-6172  
Email: mandpclublambs@yahoo.com  
www.morrisandpiersonclublambs.com

**2926-February Dam**

**2927-March Dam**

**2928-March Dam**

**2929-April Dam**

**2930-April Dam**

*Consigned by*  
**FARAO CLUB LAMBS**

Jaime & Frank Farao  
28803 Gun Club Rd., Gustine, CA 95322  
209/854-1033 ~ Cell: 209/777-1033  
Email: faraoclublamb@hotmai.com  
www.faraoclublamb.com

**2931-January Sire**

**2932-February Sire**

**2933-March Sire**

**2934-February Dam**

**2935-March Dam**

Our lambs will be sired by our Poe son that has done a great job in siring heavy muscled, structurally correct lambs.

*Consigned by*  
**SIMPSON LIVESTOCK**

Jason Simpson  
20727 WCR 84, Ault, CO 80610  
970/834-2610 ~ Cell: 970/371-0276  
Email: jsimpsoncl@aol.com  
www.simpsonlivestock.com

**2936-Yearling Sire**

**2937-Yearling Dam**

**2938-Fall Sire**

**2939-Fall Sire**

# HAMPSHIRE

**2940-Fall Dam**

**2941-January Sire**

**2942-February Sire**

**2943-March Sire**

**2944-March Sire**

**2945-April Sire**

**2946-January Dam**

**2947-January Dam**

**2948-February Dam**

**2949-February Dam**

**2950-March Dam**

**2951-March Dam**

**2952-March Dam**

**2953-April Dam**

**2954-April Dam**

*Consigned by*  
**SIMPSON/BEGALKA/  
LAMBRIGHT**

20727 WCR 84, Ault, CO 80610  
970/834-2610 ~ Cell: 970/371-0276  
Email: jsimpsoncl@aol.com

**2955-January Sire**

*Consigned by*  
**JIMMY DAVIS**

1204 W Colorado, Walters, OK 73572  
580/585-3822

**2956-Yearling Dam**

**2957-March Dam**



Reserve Champion Hampshire January Ram Lamb at the '09 Midwest Stud Ram Sale sold from Colorado to Iowa at \$5,000.

*Consigned by*  
**LEVENTINI CLUB  
LAMBS**

Michael Leventini  
624 S Indiana Ave., Modesto, CA 95357  
209/529-2774 ~ Cell: 209/605-3274  
Email: mleventini@msn.com  
Web: www.leventiniclublambs.com

**2958-Yearling Dam**

**2959-Fall Sire**

**2960-January Sire**

**2961-February Sire**

**2962-March Sire**

**2963-January Dam**

**2964-February Dam**



**Sires ~ Dams**

**MIDWEST STUD RAM SALE**

# HAMPSHIRE



2nd Hampshire January Ram Lamb at the '09 Midwest Stud Ram Sale sold from California to Texas at \$8000.

## 2974-April Dam

*Consigned by*  
**HORNER SHOW LAMBS**

Dick Horner  
RR 1 Box 388D, Vandalia, IL 62471  
618/283-7004 ~ Cell: 618/292-7627  
Email: [hornershowlambs@hotmail.com](mailto:hornershowlambs@hotmail.com)  
[www.clublambpage.com/horner/](http://www.clublambpage.com/horner/)

## 2975-March Sire

## 2976-February Dam

*Consigned by*  
**POE HAMPSHIRE**

Stan Poe, II  
2213 W State Rd 144, Franklin, IN 46131  
317/738-0863 ~ Cell: 317/439-8395  
Email: [poehamps@yahoo.com](mailto:poehamps@yahoo.com)  
[www.poehamps.com](http://www.poehamps.com)

## 2977-February Sire

## 2978-March Sire

## 2979-January Dam

## 2980-February Dam

## 2981-February Dam

## 2982-March Dam

## 2983-March Dam

*Consigned by*  
**DOUBLE F CLUB LAMBS**

Endre Fink ~ 859/559-7765 (cell)  
1590 Boonesboro Rd  
Winchester, KY 40391  
Email: [endre.fink@uky.edu](mailto:endre.fink@uky.edu)  
Web: [www.doublefclublambs.com](http://www.doublefclublambs.com)

## 2984-Yearling Dam

## 2985-Yearling Dam

## 2986-January Dam

## 2987-January Dam

## 2988-February Dam

## 2989-February Dam

## 2990-March Dam

## 2991-March Dam

## 2992-April Dam

## 2993-April Dam

*Consigned by*  
**PEACEFUL VALLEY SHEEP**

Larry Delaney  
520 Peaceful Valley Dr.  
Watsonville, CA 95076  
831/722-9354 ~ Cell: 831/531-4482

## 2994-Yearling Sire

## 2995-Yearling Sire

## 2996-Yearling Sire

## 2997-January Sire

## 2998-February Sire

## 2999-March Sire

*Consigned by*  
**PHIL & ZACH BOTT**

103 Bailey Park Rd.  
Williamsburg, IA 52361  
319/330-3861  
Email: [zach@firesidewinery.com](mailto:zach@firesidewinery.com)  
Web: [www.bottclublambs.com](http://www.bottclublambs.com)

## 3000-February Sire

## 3001-March Sire

## 3002-April Sire

## 3003-February Dam

## 3004-March Dam

## 3005-April Dam

*Consigned by*  
**CHABOT SHOW LAMBS**

35910 FM 914, Dublin, TX 76446  
254/785-2453 ~ Cell: 254/485-3016  
Email: [darickc@earthlink.net](mailto:darickc@earthlink.net)  
[www.clublambpage.com/chabotshowlambs/](http://www.clublambpage.com/chabotshowlambs/)

## 2965-Yearling Sire

## 2966-Yearling Dam

## 2967-Fall Sire

## 2968-January Sire

## 2969-April Sire

## 2970-February Dam

## 2971-March Dam

## 2972-March Dam

## 2973-April Dam



**Sires ~ Dams**

**MIDWEST STUD RAM SALE**

*Consigned by*  
**JUNGE SHEEP FARM**

Glenn & Janie Junge  
164 Junge Rd., Cleburne, TX 76033  
817/641-6748 ~ Cell: 817/517-4359  
Email: jungefarm@earthlink.net

**3006-Yearling Dam**

**3007-Yearling Dam**

*Consigned by*  
**COLE CLUB LAMBS**

Rex & Koby Cole Families  
11281 N 1975 Rd  
Elk City, OK 73644  
580/243-0749 ~ Cell: 806/216-1306  
Email: colewoolies@cableone.net  
Web: www.coleclublambs.com

**3008-Yearling Dam**

**3009-Yearling Dam**

**3010-January Sire**

**3011-January Sire**

**3012-February Sire**

**3013-February Sire**

**3014-March Sire**

**3015-March Sire**

**3016-April Sire**

**3017-April Sire**

**3018-January Dam**

**3019-January Dam**

**3020-February Dam**

**3021-February Dam**

**3022-March Dam**

**3023-March Dam**

**3024-April Dam**

**3025-April Dam**

# HAMPSHIRE

*Consigned by*  
**KIRSCHTEN  
SHEEP FARM**

Shane & Kerry Kirschten  
5060 Jefferson Ave, Alton, IA 51003  
712/256-8953 ~ Cell: 712/395-0377  
Email: kirschten@netllowb.net

**3026-April Sire**

**3027-April Dam**

*Consigned by*  
**NICEWONGER  
CLUB LAMBS**

John Nicewonger ~ 209/847-8976  
6706 Lone Dale Rd., Oakdale, CA 95361  
Web: www.nicelamb@cwnet.com

**3028-February Sire**

**3029-April Dam**

*Consigned by*  
**SCHAEFER  
SHEEP & CATTLE**

Scott Schaefer  
920 S West Oaks, Stillwater, OK 74074  
405/780-7241 ~ Cell: 405/743-5646  
Email: scott@schaefersheepandcattle.com  
Web: schaefersheepandcattle.com

**3030-Yearling Sire**

**3031-Yearling Dam**

**3032-February Sire**

**3033-March Sire**

**3034-February Dam**

*Consigned by*  
**HICKEY LIVESTOCK**

Jace Hickey  
17035 Rd 26, Brush, CO 80723  
970/467-0947 ~ Cell: 970/380-2861  
Email: jace@superiorlivestock.com  
Web: www.hickeylivestock.com

**3035-January Sire**



Reserve Senior Champion Hampshire Yearling Ewe at the '09 Midwest Stud Ram Sale sold from Kentucky to Kansas at \$2500.

**3036-February Sire**

**3037-April Sire**

**3038-January Dam**

**3039-March Dam**

**3040-March Dam**

**3041-April Dam**

*Consigned by*  
**K POE LIVESTOCK**

Kalen Poe ~ 317/797-7387 (cell)  
2207 W St Rd 144, Franklin, IN 46131  
Email: kalen@kpoelivestock.com  
Web: www.kpoelivestock.com

**3042-February Dam**

**3043-March Dam**



**Sires ~ Dams**

**MIDWEST STUD RAM SALE**

# HAMPSHIRE



2nd Hampshire March Ram Lamb at the '09 Midwest Stud Ram Sale sold from Michigan to Indiana at \$8000.

*Consigned by*  
**NELSON-WHITE  
SHOW LAMBS**

1841 Co Rd 7, Wedowee, AL 36278  
256/363-2913 ~ Cell: 334/863-1556  
Email: nelsonlambs@aol.com  
Web: www.nelsonwhiteshowlambs.com  
VFSCP ~ 2007

**3044-February Dam**

**3045-March Dam**

**3046-April Dam**

*Consigned by*  
**BOYER HAMPSHIRE**

Barb & Ken Boyer  
5300 Hwy 63 S, Rochester, MN 55904  
507/282-3776 ~ Cell: 507/261-3382  
Email: frigidfold@aol.com

**3047-Yearling Sire**

**3048-January Sire**



**3049-January Sire**

**3050-January Dam**

Our entries will be sire dby Quam 7078 RR NN,  
a son of Miller 0-239 "Phenom".

*Consigned by*  
**PARR HAMPSHIRE**

Roger & Marie Parr Family  
33425 E CR 1000 N  
Mason City, IL 62664  
217/482-3680 ~ Cell: 309/427-7141  
Email: rparr@frontiernet.net  
Web: parrhampshires.com

**3051-Yearling Sire**

**3052-Yearling Sire**

**3053-Yearling Sire**

Two of our yearling ram entries will be sired by  
our Wheaton "Classic" ram, which sired our top  
selling ram last year at the Midwest Sale.

**3054-Yearling Dam**

**3055-Yearling Dam**

Our yearling ewes come from our "keeper" pen  
and will be the same quality as last years ewes.

**3056-January Sire**

**3057-February Sire**

**3058-March Sire**

**3059-January Dam**

**3060-February Dam**

**3061-March Dam**

Spring lambs will be sired by our Cabaniss bred  
ram, "Mister" or the Wheaton "Classic" ram.

*Consigned by*  
**HEATH GEIMAN HAMPS**

27411 W 4th N, Garden Plain, KS 67050  
316/531-2632 ~ Cell: 316/304-9227  
Email: geiman@msn.com  
www.heathgeimanhamps.com

**3062-Yearling Dam**

**3063-Yearling Dam**

**3064-January Sire**

**3065-February Sire**

**3066-January Dam**

**3067-February Dam**

**3068-February Dam**

*Consigned by*  
**HARRELL CLUB LAMBS**

Joe Harrell ~ 580/591-1091  
24848 W Gore Blvd., Indianola, OK 73552

**3069-Yearling Sire**

**3070-Yearling Dam**

**3071-Yearling Dam**

**3072-February Dam**

**3073-March Dam**

*Consigned by*  
**ALLRED/ELLIOTT**

Clay Elliott  
17422 Elm St W., Calumet, OK 73014  
405/422-3313 ~ Cell: 575/635-6340  
Email: lilielliott@hotmail.com

**3074-Fall Sire**

**3075-January Sire**

**3076-February Sire**

**3077-February Sire**

**3078-March Sire**

**3079-March Sire**

**3080-April Sire**

**3081-January Dam**

**3082-February Dam**

**3083-March Dam**

**3084-March Dam**

**Sires ~ Dams**

**MIDWEST STUD RAM SALE**

Consigned by  
**OVERMAN  
CLUB LAMBS**

Mark Overman  
12370 WCR 78, Eaton, CO 80615  
970/686-2219 ~ Cell: 970/227-3869  
Email: onyxover@aol.com  
Web: www.clublambpage.com

**3085-February Sire**

**3086-March Sire**

**3087-March Sire**

**3088-April Sire**

**3089-February Dam**

**3090-March Dam**

**3091-April Dam**

**3092-April Dam**

Consigned by  
**RULE SHEEP CO**

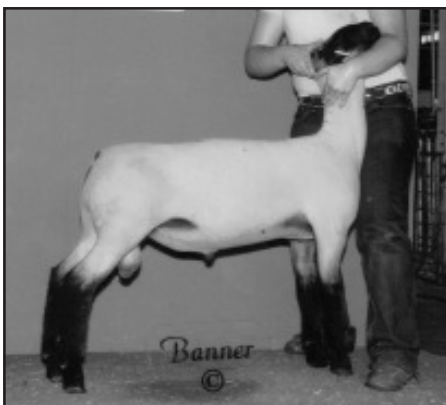
Tyson Rule  
PO Box 27, Hawarden, IA 51023  
712/552-2498 ~ Cell: 712/552-7280  
Email: tysonrule@hotmail.com  
Web: www.rulesheep.com

**3093-Yearling Sire**

**3094-Yearling Dam**

**3095-Yearling Dam**

**3096-January Sire**



5th April Hampshire Ram Lamb at the '09  
Midwest Stud Ram Sale sold from Iowa to  
Wyoming at \$9000.

# HAMPSHIRE

**3097-February Sire**

**3098-March Sire**

**3099-April Sire**

**3100-April Sire**

**3101-March Dam**

**3102-April Dam**

**3103-April Dam**



1st Hampshire March Ewe Lamb at the '09  
Midwest Stud Ram Sale sold from South  
Dakota to North Carolina at \$1100.

Consigned by  
**CABANISS CLUB  
LAMBS**

Riley & Morgan Cabaniss  
Rt. 1 Box 19, Arapaho, OK 73620  
Morgan: 580/323-2802  
Riley: 580/445-6240

**3104-Yearling Sire**

**3105-Yearling Sire**

**3106-Yearling Sire**

**3107-Yearling Sire**

**3108-Yearling Sire**

**3109-Yearling Sire**

**3110-Fall Sire**

**3111-January Sire**

**3112-January Sire**

**3113-February Sire**

**3114-February Sire**

**3115-March Sire**

**3116-March Sire**

**3117-April Sire**

**3118-April Sire**

**3119-January Dam**

**3120-February Dam**

**3121-March Dam**

**3122-April Dam**

Consigned by  
**MILLER HAMPSHIRE**

Jim Miller ~ 806/487-6891  
HCR 4 Box 16, Seagraves, TX 79359  
Email: millerhampshires@hotmail.com  
Web: www.millerhampshires.com

**3123-Yearling Sire**

**3124-Yearling Sire**

**3125-Yearling Sire**



**Sires ~ Dams**

**MIDWEST STUD RAM SALE**

# HAMPSHIRE



6th Hampshire Yearling Ewe at the '09 Midwest Stud Ram Sale sold from Texas to Iowa at \$13,500.

**3126-Yearling Dam**

**3127-Yearling Dam**

**3128-Yearling Dam**

**3129-Yearling Dam**

**3130-Yearling Dam**

**3131-Yearling Dam**

**3132-Yearling Dam**

**3133-Yearling Dam**

**3134-Yearling Dam**

**3135-Yearling Dam**

**3136-Yearling Dam**

**3137-Yearling Dam**

**3138-Yearling Dam**



**3139-Yearling Dam**

**3140-Yearling Dam**

**3141-Yearling Dam**

**3142-Yearling Dam**

**3143-Yearling Dam**

**3144-Yearling Dam**

**3145-Yearling Dam**

**3146-Yearling Dam**

**3147-Yearling Dam**

**3148-Yearling Dam**

**3149-February Sire**

**3150-February Sire**

**3151-March Sire**

**3152-March Sire**

*Consigned by*

## **AWTR CLUB LAMBS**

Keith Anderson ~ 605/261-1282 (cell)  
47932 298th St., Alcester, SD 57001  
Email: keithanderson@alliancecom.net  
Web: www.awtrclublambs.com

**3153-February Sire**

**3154-March Sire**

*Consigned by*

## **CREGO LIVESTOCK**

Larry & Diana Crego  
7710 Livstock Lane, Ft. Collins, CO 80524  
970/482-6958 ~ Cell: 970/217-9059

**3155-Yearling Sire**

**3156-Yearling Sire**

**3157-Yearling Dam**

**3158-Yearling Dam**

**3159-January Sire**

**3160-January Sire**

**3161-January Sire**

**3162-February Sire**

**3163-February Sire**

**3164-February Sire**

**3165-January Dam**

**3166-February Dam**

**3167-February Dam**

*Consigned by*

## **ELLERBROCK CLUB LAMBS**

Brad, Lisa, Cole & Kendall  
13383 E 2000th St., Atkinson, IL 61235  
Brad Cell: 309/657-7515  
Jeff, Kelly & Kashen  
20082 N 1450th Ave., Atkinson, IL 61235  
Jeff: 309/944-7331  
Adam Sellers: 814/442-6755 (flk mgr)  
Email: bellerbrock@nbsmail.net  
Web: www.ellerbrockclublambs.com

**3168-Yearling Sire**

**3169-Yearling Sire**

**3170-Yearling Sire**

**3171-February Sire**

**3172-February Sire**

**3173-February Sire**

**3174-February Sire**

**3175-February Sire**

**3176-March Sire**

**Sires ~ Dams**

**MIDWEST STUD RAM SALE**

**3177-March Sire**

**3178-March Sire**

**3179-April Sire**

**3180-April Sire**

**3181-January Dam**

**3182-February Dam**

**3183-February Dam**

**3184-February Dam**

**3185-February Dam**

**3186-March Dam**

**3187-March Dam**

**3188-March Dam**

**3189-March Dam**

**3190-March Dam**

**3191-April Dam**

**3192-April Dam**

*Consigned by*  
**POWERCAT  
CLUB LAMBS**

Jim Nelssen Family ~ 785/776-1407  
7234 Tuttle Creek Blvd.  
Manhattan, KS 66503

**3193-March Sire**  
**Nelssen 10135 RR NN**

**B: 03/06/10**  
**S: Nelssen 9000**  
**D: Wheaton 7-039**

A favorite of many from day one! This ram is out of "Evolution" our great "Rock Star", Elliott 8303, son. His mother is the popular Wheaton ewe we purchased at the Midwest Sale. This ram has awesome eye appeal, combined with a powerful top and super bone and large foot size. He exemplifies the strengths of his sire.

# HAMPSHIRE

**3194-March Dam**  
**Nelssen 10160**

**B: 03/15/10**  
**S: Nelssen 9000**  
**D: Nelssen 8010**

This complete ewe lamb is a granddaughter of McIlrath 5054W, which is our great "Top Gun", Cabaniss, daughter. She would make a super show ewe and a top brood ewe!

*Consigned by*  
**TOM & CASSIE TOLLE**

2687 N Ave., Toledo, IA 52342  
641/484-2590 ~ Cell: 319/538-6590  
Email: ttcls@yahoo.com  
Web: www.clublambpage.com

**3195-March Sire**

**3196-February Dam**

**3197-March Dam**

**3198-March Dam**

**3199-April Dam**

**3200-April Dam**

*Consigned by*  
**TAYLOR MADE  
SHOW LAMBS**

Steve Taylor & Jay Nelson  
14983 150th St., Perry, IA 50220  
515/577-8043 or 515/494-2237

**4001-February Sire**

*Consigned by*  
**RIETEMA CLUB LAMBS**

Bob Rietema ~ 712/441-3060  
1265 2nd Ave SE, Sioux Center, IA 51250

**4002-February Sire**

**4003-February Dam**



6th Hampshire March Ram Lamb at the '09 Midwest Stud Ram Sale sold from Illinois to Iowa at \$7000.

*Consigned by*  
**LANIER FARMS**

Joel Lanier  
151 CR 309, Seminole, TX 79360  
432/758-9067 ~ Cell: 432/770-0483  
Email: lanierjoel@yahoo.com  
Web: www.lanierclublambs.com

**4004-Yearling Dam**

**4005-April Dam**

*Consigned by*  
**LANGEMEIER  
CLUB LAMBS**

Kent Langemeier  
2117 CR 12, Mead, NE 68401  
402/624-3325 ~ Cell: 402/443-6615  
Justin Nathan-Shepherd ~ 402/369-2876

**4006-February Sire**

**4007-February Sire**



**Sires ~ Dams**

**MIDWEST STUD RAM SALE**