

Consigned By
OLD CHESTER FARM

Warren, Simon & Sally Squires
PO Box 4-Chesterville, OH 43317
H: 419/768-2531 ~ C: 614/284-4141
Email: msquires@csc.edu

1351-Fall Ewe Lamb

Sally & Simon Squires 237

B: 9/27/2010 Twin RR
S: Whitmer 0082 681053
D: Galleher K-86 634896

Sired by the Reserve Senior Champion Ram at the '10 National Sale. Half sister to the High Selling Horned Dorset at the '11 Ohio Dorset Sale. Futurity Nominated.

Consigned By
INBODY HORNED DORSETS

Charles & Sierra Inbody
17323 St Rt 235 Apt B
Bluffton, OH 45817

H: 419/890-3308 ~ C: 419/348-0291
Email: sinbody@rockets.utoledo.edu

1352-Early Spring Ewe Lamb
Information Sale Day

The sire was best headed at the OH State Fair in '09 and second at the NAILE in both open and junior show. Dam is full Cassell breeding.

Consigned By
PATOKA VALLEY SHEEP

Mark lunghuhn Family
1138 E 200 N-Princeton, IN 47670
H: 812/386-7120 ~ C: 812/664-8144
Email: mtiunghuhn@hotmail.com

1353-Yearling Ewe

Patoka Valley 0959

B: 12/25/2009 Single
S: Robert E 651553
D: Patoka Valley 0725 669035

Christmas ewe out of the '05 National Champion Ram.

1354-Yearling Ewe

Patoka Valley 1010

B: 2/10/2010 Single
S: Robert E 651553
D: Seyon RD324 674935

Dam is from Maine's Walsh flock.

1355-Early Spring Ewe Lamb

Information Sale Day

Will be sired by our new Cassell ram.

**Substitute Entries
Will Be Identified
With a Line
Under the Lot Number**

HORNED DORSETS

1356-Fall Ram Lamb

Patoka Valley 1051

B: 9/19/2010 Single
S: PRC W3516 682100
D: Patoka Valley 0656 666942

This Fall ram lamb has a classic wide hornset and a long hind saddle.

Consigned By
LANCE THOMPSON

8091 Abbey Rd NE
Carrollton, OH 44615
H: 330/895-2722

1357-Yearling Ewe

L Thompson 7186

B: 1/3/2010 Single
S: L Thompson OR-242 669866
D: L Thompson OR-266 674136

1358-Early Spring Ewe Lamb

Information Sale Day

Consigned By
FORSTER SHEEP FARM

Monte Forster
3330 McFarland Rd-Tangent, OR 97389
H: 541/928-1268 ~ C: 541/979-8629
Email: monteforster@comcast.net

1359-Yearling Ewe

Information Sale Day

A very functional ewe. She has a great head and structure. Best of North American bloodlines. She is a good one.

Consigned By
**CRILL FAMILY
HORNED DORSETS**

Joe Crill
4641 E 450 N-Rochester, IN 46975
H: 574/223-2994 ~ C: 574/727-0266
Email: jpcrill@rtcol.com

1360-Fall Ram Lamb

598

B: 9/25/2010 Twin
S: Ewephoric 815 677780
D: Crill 211 680287

1361-Fall Ewe Lamb

Y-133

B: 9/14/2010 Single
S: Ewephoric 815 677780
D: Crill 220 683368



Grand Champion Fall Ram Lamb was a Virginia entry going to Missouri for \$800 at the 2010 Midwest Stud Ram Sale.

1362-Early Spring Ewe Lamb

Y-145

B: 1/11/2011 Twin
S: Ewephoric 815 677780
D: Crill Y-118 679366

Consigned By
**CASSELL
HORNED DORSETS**

Paul, Barbara, Leon,
MaryAnn, Diana, & Melissa Cassell
1686 Lovers Lane-Wytheville, VA 24382
C: 202/255-1764

Email: pcasse2001@yahoo.com
Web: www.hornedorsets.com

1363-Yearling Ram

PRC W5293

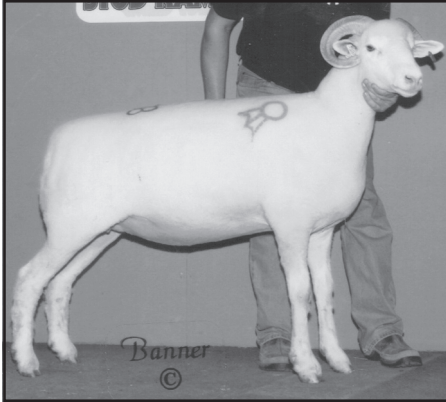
B: 3/1/2010 Twin
S: Shott 704 665693
D: PRC PR42

This ram deserves to be at our National Sale because of his beautiful horn shape coupled with his length of body and great front. Hid dam is out of two NAILE Champions (Schwartz 150 and L Thompson OR 60).



MIDWEST STUD RAM SALE

HORNED DORSETS



Grand Champion Yearling Ewe at the 2010 Midwest Stud Ram Sale sold from Virginia to Missouri at \$950.

1365-Yearling Ewe
Information Sale Day

1366-Yearling Ewe
PRC W5241

B: 1/28/2010 Triplet
S: PRC W2109 668391
D: L Tompson OR 61 627129

This ewe exemplifies what we expect in a great female; she's beautifully headed with great size and total dimension. Her sire is PRC W2109, the '08 NAILE Champion Ram. Her dam is a great "Hot Shot" daughter.

1367-Fall Ewe Lamb
Information Sale Day

1368-Early Spring Ewe Lamb
Information Sale Day

1369-Early Spring Ewe Lamb
Information Sale Day

1370-Late Spring Ewe Lamb
Information Sale Day

1371-SS Spring Ewe Lamb
Information Sale Day



1364-Spring Ram Lamb
Information Sale Day



COME SEE US AT OUR USUAL LOCATION IN...

Manufacturers of Quality
Livestock Equipment!

SEDALIA

Proud Sponsor Of The
**BEST CONSIGNMENT
AWARDS**

AT MAJOR
PUREBRED SHEEP SALES
THROUGHOUT AMERICA

Phone or Write Now
For Our Complete
Catalog of Sheep
Equipment!

*"Always Striving
to Improve"*

ORDER NOW!
Save Shipping Charges!

Order Your Needs Now and We
Will Deliver Your Items Free of
Charge to the...

**MIDWEST
STUD RAM SALE**

...Or Other Major Sales
Where We Will Have Displays!

**TOWNSEND'S
SALES**
LIVESTOCK EQUIPMENT

4141 South 25 West
Trafalgar, Indiana 46181

KENNETH & LEE TOWNSEND, OWNERS
317/736-4047

MIDWEST STUD RAM SALE